

24-Port Gigabit + 2-Port Gigabit Combo Base-T/SFP L2 Managed High Power PoE Switch

FR-S3126GC-518HP1



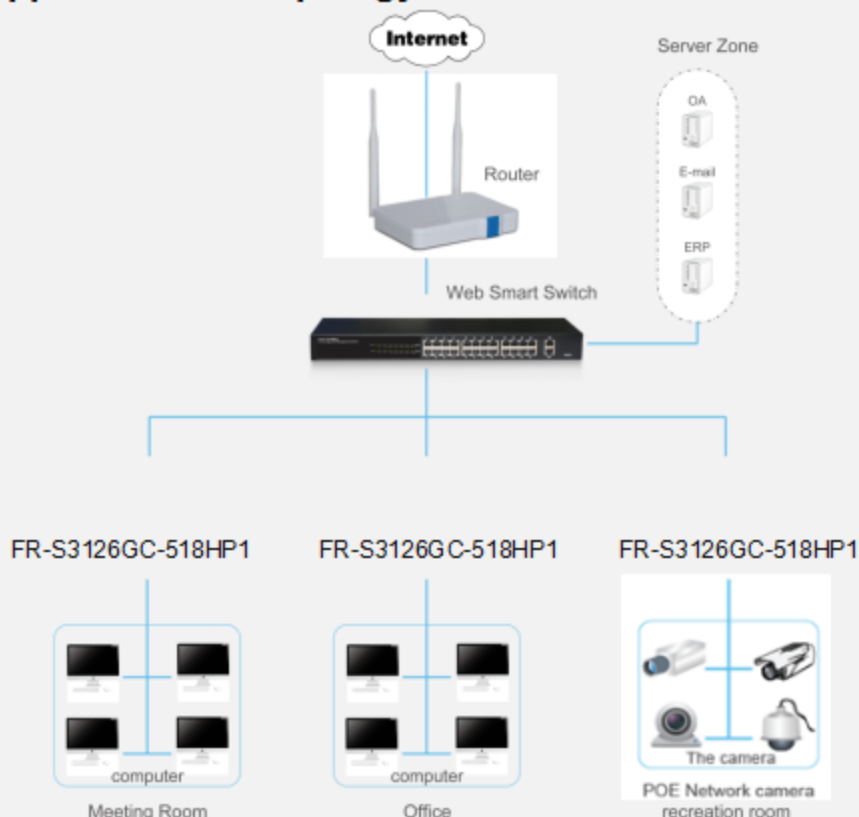
characteristics

- 24 x 10/100/1000Mbps Auto MDI/MDI-X Ethernet port , Two Combo ports
- Switching Capacity up to 52G
- Store and forward mode operates
- Support Web-based Management
- PoE single port power 21-24 port maximum support 90W, 1-20 port maximum support 30W, PoE maximum output total power up to 518W

Description

FR-S3126GC-518HP1 is a high performance the second managed gigabit switch. Provides twenty-four 10/100/1000Mbps self-adaption RJ45 ports, plus two gigabit Combo ports, it can be used to link bandwidth higher upstream equipment. Support VLAN ACL based on port, easily implement network monitoring, traffic regulation, priority tag and traffic control. Support traditional STP/RSTP/MSTP 2 link protection technology; greatly improve the ability of fault tolerance, redundancy backup to ensure the stable operation of the network. Support ACL control based on the time, easy control the access time accurately. Support 802.1x authentication based on the port and MAC, easily set user access. Perfect QOS strategy and plenty of VLAN function. The maximum support of 21-24 ports is 90W, PoE ports can automatically detect and supply power with those IEEE 802.3at/af compliant Powered Devices (PD). In this situation, the electrical power is transmitted along with data in one single cable allowing you to expand your network where there are no power lines or outlets, where you wish to fix devices such as AP, IP Cameras or IP Phones, etc

Application of topology



● **24-Port Gigabit + 2-Port Gigabit Combo
Base-T/SFP L2 Managed High Power
PoE Switch**

FR-S3126GC-518HP1

■ Features

- Comply with IEEE802.3i, IEEE802.3u, IEEE802.3ab, IEEE802.3x, IEEE802.3z, IEEE802.3ad ,standards
- Supports IEEE802.3at/af PoE standards
- The maximum support of 21-24 ports is 90W, total power up to 518W for all PoE ports
- Supports IEEE802.3x flow control for Full-duplex Mode and backpressure for Half-duplex Mode
- Supports MAC address auto-learning and auto-aging
- Store and forward mode operates
- Support SNMP/RMON/TELENET
- Supports IEEE802.1Q VLAN,4K VLAN Table
- Support IEEE802.1p Priority Queues
- Support 2K+256-entry ingress and egress ACL
- Support Storm Control
- Support QoS、Port Mirroring、Link Aggregation Protocol
- LED indicators for monitoring PSE, Link/Activity/Speed
- Web-based Management Support

■ Hardware Specification

Model	FR-S3126GC-518HP1
Chipset	RTL8382M+2*RTL8218B+RTL8214FC+2*PD69208M+PD69200+PD69208T4+PD69204T4
Standards	IEEE 802.3i, IEEE 802.3u, IEEE 802.3ab, IEEE802.3x, IEEE802.3z, IEEE802.3ad, IEEE802.1P, IEEE802.1Q, IEEE802.3at, IEEE802.3af, IEEE802.3bt
Network Media (Cable)	10BASE-T: UTP category 3,4,5 cable (maximum 100m) 100BASE-Tx: UTP category 5,5e cable (maximum 100m) 1000BASE-T: UTP category 5e,6 cable (maximum 100m) 1000Base-SX:62.5µm/50µm MMF(2m~550m) 1000Base-LX:62.5µm/50µm MMF(2m~550m) or 10µm SMF (2m~5000m)
Transfer Method	Store-and-Forward
Switching Capacity	52Gbps

24-Port Gigabit + 2-Port Gigabit Combo Base-T/SFP L2 Managed High Power PoE Switch

FR-S3126GC-518HP1

Packet Forwarding Rate		38.69Mpps
Packet Buffer		4.1Mbit
MAC Address Table		8K
Jumbo Frame		9KByte
Number of Ports		24 x 10/100/1000Mbps Auto-Negotiation ports 2x Gigabit Combo ports 1 x RJ45 Console Port
PoE Ports(RJ45)		24* PoE ports compliant with IEEE802.3at/af, The 21-24 ports compliant with IEEE802.3bt
Power Pin Assignment		1-20 ports: 1/2(-), 3/6(+); 21-24 ports : 1/2(-), 3/6(+); 4/5(+), 7/8(-);
PoE Budget		518W
LED indicators	Per Port	10/100Mbps Link/Act. Orange 1000Mbps Link/Act. Green PoE: Orange/Green
	Per Device	Power: Green SYS:Green
Power Supply		AC 100-240V/50-60Hz 550W internal power
Power Consumption		Maximum: W(220V/50Hz)
Dimensions (W x D x H)		440*330*44mm
Environment		Operating Temperature: 0°C - 45°C Storage Temperature: -40°C - 70°C Operating Humidity: 10%~90% RH non-condensing Storage humidity: 5%~90% RH non-condensing

**24-Port Gigabit + 2-Port Gigabit Combo
Base-T/SFP L2 Managed High
Power PoE Switch**

FR-S3126GC-518HP1

Software Specification

System	IP Configuration(IPV4 、 IPV6)
	User Configuration
	Time Settings(SNTP)
	Log Management
	SNMP Management(V2)
	RMON
Port	Port Configuration
	Link Aggregation(static 、 LACP)
	Port Mirroring
	Jumbo Frame
	Port Error Disabled Configuration
Vlan	Port based VLAN
	Protocol based VLAN
IGMP	IGMP Snooping (V2 、 V3)
	Multicast group (256)
STP	IEEE 802.1D STP
	IEEE 802.1W RSTP
	IEEE 802.1S MSTP
Security	Broadcast / Unicast / Multicast Storm Control
	IEEE 802.1x
	DHCP Snooping (IP 、 MAC 、 Port)
ACL	MAC-Based ACL
	MAC-Based ACE
	IPv4-Based ACL
	IPv4-Based ACE
QoS	WRR (Weighted Round Robin)
	Port based QoS
	IEEE 802.1p Class of Service
	DSCP-based QoS
	QoS basic mode
	QoS advanced mode (Policy based)
Bandwidth Control	Ingress Port
	Ingress VLAN
	Egress Port
	Egress Queue
MAC Address Setting	Static Mac Setting
	MAC Filtering
	Dynamic Address Learn/Setting
	Rma Setting
LLDP	LLDP Port Setting
	MED Network Policy
Management	System Status
	Ping Test
	Factory Reboot Switch
	Backup/Upgrade Manager
	Configuration Manager