

## 24-Port Gigabit + 2-Port Gigabit SFP Unmanaged Visible PoE Switch

FR-S1026PEGF-E

### Characteristic

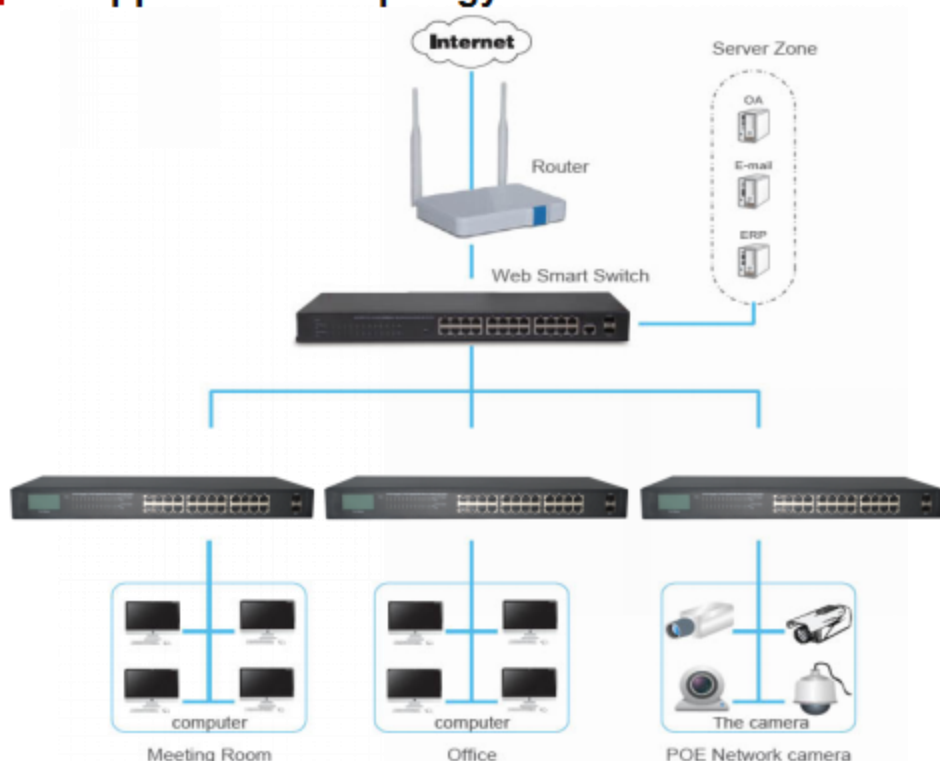
- Intelligent identification
- High performance, durable stability
- 24 PoE Port , 370W total PoE budget
- Support 802.3at and 802.3af
- LCD display PoE power supply condition real-time
- Adopt the store - forwarding mode
- Switching Capacity 52Gb

### Description

FR-S1026PEGF-E is a 24port 10/100/1000Mbps + 2SFP Slots PoE Ethernet Switch provides the seamless network connection. Based on Gigabit Ethernet Technology, It is essential to helping solve network bottlenecks that frequently develop as more advanced computer users and newer applications continue to demand greater network resources.

These PoE ports can automatically detect and supply power with those IEEE 802.3at compliant Powered Devices (PD) such as AP, IP Cameras or IP Phones, etc. Especially, the integrated LCD can real-time display state of POE power supply, including POE power budget (PB), total output power (total), output power of each port, over-current protection (OCP), short circuit protection (SCP), PD light load(ULP) information, and also can show the warning information, such as high temperature, over voltage, low voltage, at the same time all ports to stop power supply for PD, power distribution and fault in the clear. The switch is easy to install and use. It requires no configuration and installation. It is a great selection for expanding office network.

### The application of topology



## Features

- Comply IEEE 802.3i, IEEE 802.3u, IEEE802.3ab, IEEE802.3z, IEEE802.3x, IEEE802.3az standards
- Supports IEEE802.3af, IEEE802.3at standards
- Supports PoE power up to 30W for each PoE port, all power up to 370W
- Supports IEEE802.3x flow control for Full-duplex Mode and backpressure for Half-duplex Mode
- 24 x 10/100/1000Mbps Auto MDI/MDI-X Ethernet port
- 2 x 100/1000Mbps SFP slots
- LED indicators for monitoring power, link/activity
- LCD for monitoring PoE status real-time

## Specification

Model Name		FR-S1026PEGF-E
Chipset		RTL8382L+2*RTL8218B+2*RTL8231+PD69100+3*PD69108
Standards and Protocols		IEEE 802.3i, IEEE 802.3u, IEEE802.3ab, IEEE802.3x, IEEE802.3z, IEEE802.3az, IEEE 802.3at, IEEE 802.3af
Interface		24 x 10/100/1000Mbps Auto-Negotiation ports 2 x 100/1000Mbps SFP ports
Network Media		10BASE-T: UTP category 3,4 cable (maximum 100m) 100BASE-TX: UTP category 5,5e cable (maximum 100m) 1000Base-T: UTP category 5, 5e,6 cable (maximum 100m) 1000Base-X:MMF, SMF
Transfer Method		Store-and-Forward
MAC Address Table		8K
Switching Capacity		52Gbps
Packet Forwarding Rate		38.688Mpps
Packet Buffer		4.1Mbit
Jumbo Frame		9KByte
PoE Ports(RJ45)		24 x PoE ports compliant with 802.3at/af
PoE Budget		Maximum: 370W
Indicators	Per Device	Power
	Per Port	Link/Activity/Speed, PoE
Display		128*64 Dot matrix LCD
Power Supply		Input: 100-240VAC, 50/60Hz
Power Consumption		Maximum(PoE on): 418W @220V/50Hz
Dimensions ( W x D x H )		L441.1*W204.3*H44mm
Environment		Operating Temperature: 0℃~45℃ Storage Temperature: -40℃~70℃ Operating Humidity: 10%~90% non-condensing Storage Humidity: 5%~90% non-condensing