

8-Port Gigabit+2-Port Gigabit SFP Ethernet Unmanaged PoE Switch

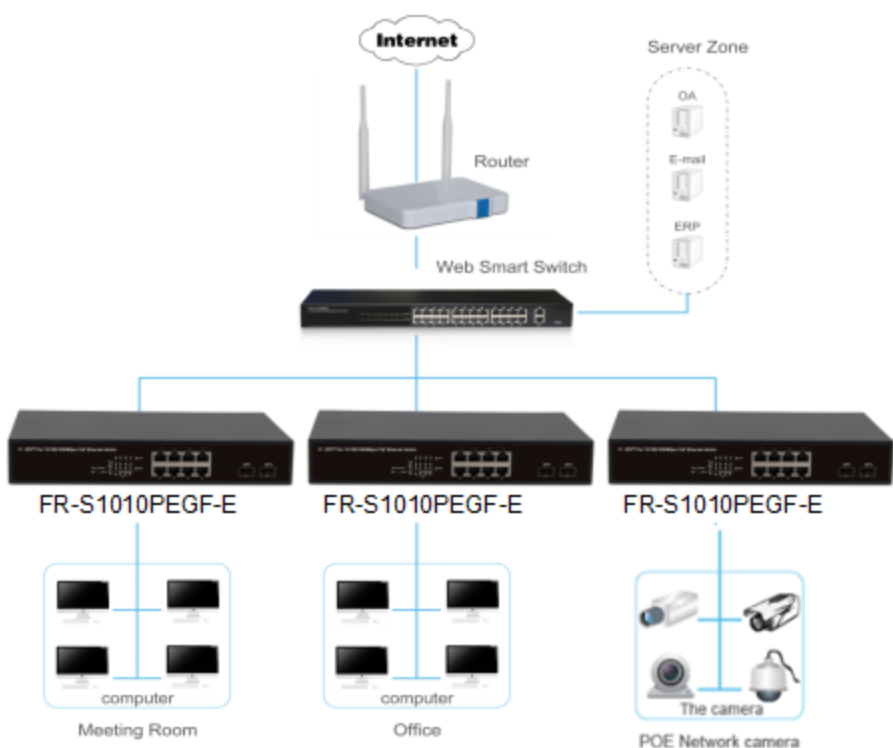
FR-S1010PEGF-E

Description

FR-S1010PEGF-E is 8 ports 10/100/1000Mbps + 2 ports 100/1000Mbps SFP Slots Unmanaged Ethernet PoE Switch. This switch is a design of high integration level, exquisite, portable, easy to operate, which is suitable for the small and medium office and home network. The switch provide you with a simple, economic, standard and high performance of network application plan, it is ideal choice to promote the department and working group performance . It provide simple and understood LED indicator light on the front panel, so that you can quickly judge the working state of the switch, and help to diagnose the network failure.

These PoE ports can automatically detect and supply power with those IEEE 802.3at compliant Powered Devices (PD). In this situation, the electrical power is transmitted along with data in one single cable allowing you to expand your network where there are no power lines or outlets, where you wish to fix devices such as AP, IP Cameras or IP Phones, etc.

application



Features

- Built-in flow control switch , control of all the port flow control functions can be manually opened and closed
- 2*1000Mbps SFP ports
- Internal 150W power supply ,high performance , durable stability
- Adopt the store - forwarding mode
- Switching Capacity 20Gbps
- Complied with IEEE802.3at backward compatibility IEEE802.3af
- Supports PoE power up to 30W for each PoE port, total 140W for all PoE ports

Features

- Comply with IEEE 802.3i, IEEE802.3z, IEEE 802.3u, IEEE802.3x, IEEE802.3ab standards
- Supports IEEE802.3af, IEEE802.3at standards
- Supports PoE power up to 30W for each PoE port, all power up to 140W
- 4K MAC address table of the switch with auto-learning and auto-aging
- Supports IEEE802.3x flow control for Full-duplex mode and backpressure for Half-duplex mode
- Built-in flow control switch, control of all the port flow control functions can be manually opened and closed
- Support packet length 9216 bytes jumbo frame packet forwarding at wire speed
- 8 x 10/100/1000Mbps Auto MDI/MDI-X Ethernet port
- Two 100/1000Mbps SFP Slots
- LED indicators for monitoring PoE, Link / Activity

Specification

Model	FR-S1010PEGF-E	
Chipset	RTL8370MB+RTL8231+IP808	
Standards and Protocols	IEEE 802.3i, IEEE 802.3u, IEEE 802.3ab, IEEE 802.3x, IEEE 802.3z, IEEE 802.3at, IEEE 802.3af	
Interface	8 x 10/100/1000Mbps Auto-Negotiation ports 2x 100/1000Mbps SFP ports	
Network Media	10BASE-T: UTP category 3, 4, 5 cable (maximum 100m) 100BASE-Tx: UTP category 5, 5e cable (maximum 100m) 1000Base-T: UTP category 5e, 6 cable (maximum 100m) 1000Base-SX: 62.5µm/50µm MMF(2m~550m) 1000Base-LX: 62.5µm/50µm MMF(2m~550m) Or 10µm SMF (2m~5000m)	
Transfer Method	Store-and-Forward	
MAC Address Table	4K	
Switching Capacity	20Gbps	
Packet Forwarding Rate	14.88Mpps	
Packet Buffer	1.5Mbits	
Jumbo Frame	9KBytes	
PoE Ports(RJ45)	8* PoE ports compliant with 802.3at/af	
Power Pin Assignment	1/2(+),3/6(-)	
PoE Budget	140W	
LED indicators	Per Device	Power(Green)
	Per Port	Link/Activity/Speed(Green:1000Mbps Yellow:10/100Mbps) PoE(Green)
Power Supply	100~240VAC,50/60HZ, 150W	
Power Consumption	Maximum(PoE on):162 W (220V/50Hz)	
Dimensions (W x D x H)	280*180*44.3 mm	
Environment	Operating Temperature: 0°C - 45°C Storage Temperature: -40°C - 70°C Operating Humidity: 10%~90% non-condensing Storage humidity: 5%~90% non-condensing	