

8-Port Gigabit Ethernet Unmanaged PoE Switch

FR-S1008PEG-I

Characteristics

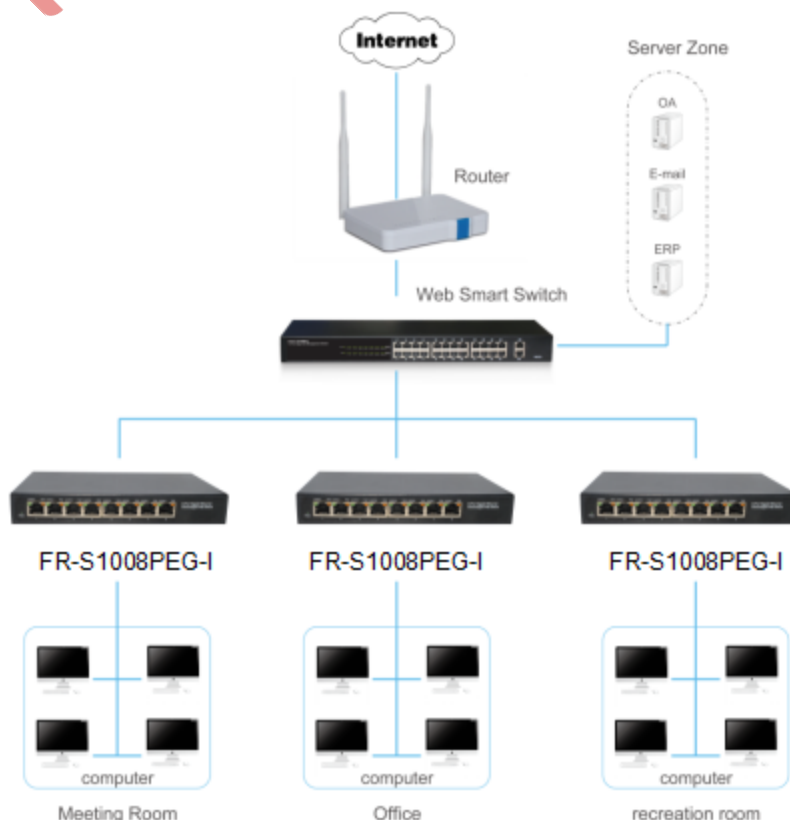
- Supports comply with PoE IEEE802.3at and IEEE802.3af Powered Device (PD)
- Supports IEEE802.3x flow control for Full-duplex Mode and backpressure for Half-duplex Mode
- Exquisite iron shell design, family info box makes the pipes easier to install
- 4K entry MAC address table, auto-learning and auto-aging
- Switching Capacity 16Gbps

Description

FR-S1008PEG-I is a 8-port 10/100/1000Mbps Unmanaged PoE switch. Provides eight 10/100/1000Mbps Auto Negotiation RJ45 ports ,support auto MDI/MDIX. Based on gigabit Ethernet network technology, the maximum efficiency to avoid network transmission flask, good network adaptability. Adopting green Ethernet technology 802.3az, by detecting the cable length and work load, and automatically adjust the signal strength, without reducing performance and effect of equipment operation, reduce the energy consumption, protect the environment.All ports have PoE power supply function, support IEEE802.3at standard, 802.3af downward compatibility, power supply equipment for Ethernet, can automatically detect identification standard of electrical equipment, and through the cable for the power supply.

The switch is easy to install and use. It requires no configuration and installation. It is suitable for expanding your home or office network, especially, being used to monitor situations.

Application



● 8-port Gigabit Ethernet Unmanaged PoE Switch FR-S1008PEG-I

I Features

- Supports 8 x10/100/1000Mbps auto-negotiation fast ethernet RJ45 ports with 8 port PoE function
- Supports PoE power up to 30W for each PoE port and 110W for all PoE ports
- Comply with PoE IEEE802.3af and IEEE802.3at
- Supports IEEE802.3x flow control for full-duplex mode and backpressure for half-duplex mode
- 4K entry MAC address table with auto-learning and auto-aging
- LED indicators for monitoring power, link, activity

I Specification

Model	FR-S1008PEG-I	
Chipset	RTL8370N-VB-CG+2*IP804A	
Standards and Protocols	IEEE802.3i、IEEE802.3u、IEEE802.3ab、IEEE802.3x、IEEE802.3az、IEEE802.3at、IEEE802.3af	
Interface	8x10/100/1000Mbps Auto MDI/MDIX ,Auto Negotiation	
Network Media	10BASE-T: UTP category 3,4,5 cable (maximum 100m) 100BASE-T: UTP category 5,5e cable (maximum 100m) 1000Base-T: UTP category 5e, 6 cable (maximum 100m)	
Transfer Method	Store-and-Forward	
MAC Address Table	4K	
Switching Capacity	16Gbps	
Packet Forwarding	11.9Mpps	
Packet Buffer	1.5Mbit	
Jumbo Frame	9216Byte	
PoE Ports(RJ45)	8* PoE ports compliant with 802.3at/af	
Power Pin Assignment	1/2(+),3/6(-)	
PoE Budget	110W	
Indicators	Per Device	Power : Green
	Per Port	Link/Act : Green PoE : Yellow
Power Supply	External power supply 53.5V/2.24A 120W	
Power Consumption	Maximum(PoE on) : 116W (DC)	
Dimensions (W x D x H)	190*100*28mm	
Environment	Operating Temperature: 0℃ - 45℃ Storage Temperature: -40℃ - 70℃ Operating Humidity: 10%~90% non-condensing Storage humidity: 5%~90% non-condensing	