

## 16-Port 10/100Mbps Web Smart PoE Switch (PoE without management)

FR-S2016PEM

### Characteristics

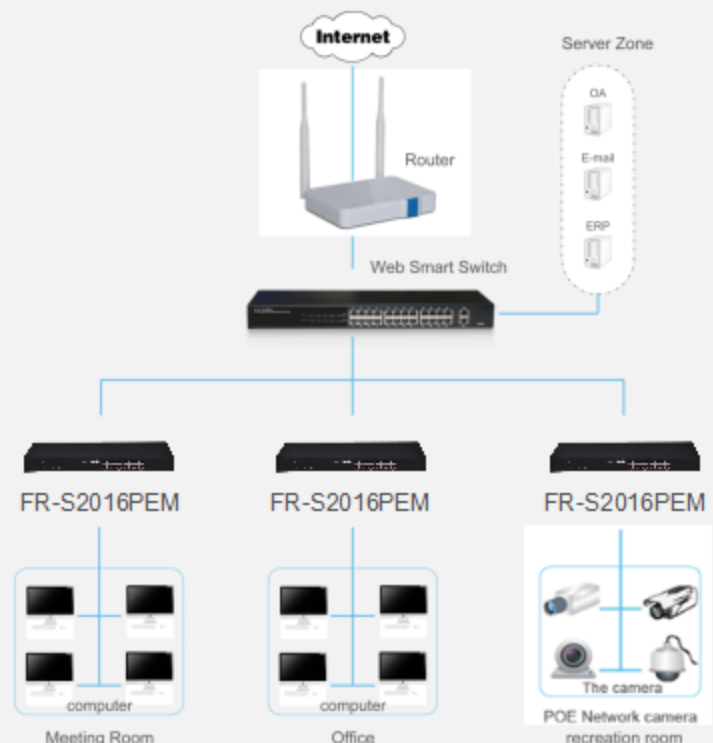
- 16 x 10/100Mbps Auto Negotiation Ethernet port
- Support port auto MDI/MDIX
- Switching Capacity up to 3.2G
- Store and forward mode operates
- Support MAC address auto-learning
- Complied with IEEE802.3at backward compatibility IEEE802.3af
- Supports PoE power up to 30W for each PoE port, total power up to 240W for all PoE ports

### Description

FR-S2016PEM is a 16-Ports 100Mbps web smart Ethernet switch, provides twenty-four 10/100Mbps Auto-Negotiation RJ45 ports. Using store-and-forward technology, combined with dynamic memory allocation, ensure the bandwidth effective allocation to each port. Supports port based VLAN and Tag based VLAN, port aggregation, bandwidth control, port mirroring, priority, static MAC address table, port security and other intelligent configuration. Built-in high reliability, design for wide voltage input application power supply, even if the voltage is not stable of power grid, also can guarantee the equipment can work normally.

These PoE ports can automatically detect and supply power with those IEEE 802.3af/at compliant Powered Devices (PD). In this situation, the electrical power is transmitted along with data in one single cable allowing you to expand your network where there are no power lines or outlets, where you wish to fix devices such as AP, IP Cameras or IP Phones, etc.

### Application of topology



**16-Port 10/100Mbps Web Smart PoE Switch  
(PoE without management)**

**FR-S2016PEM**

**Features**

- Comply with IEEE802.3, IEEE802.3u, IEEE802.3x, IEEE802.3af, IEEE802.3at standards
- Supports IEEE802.3x flow control for Full-duplex and backpressure for Half-duplex
- Store and forward mode operates
- 16 x 10/100Mbps Auto Negotiation Ethernet port, All port auto MDI/MDIX
- Supports PoE power up to 30W for each PoE port, total power up to 240W for all PoE ports
- Supports MAC address auto-learning and auto-aging
- Support web management、Storm Control、QoS、Port Mirroring、Link Aggregation Protocol
- LED indicators for monitoring power, link, activity and Poe status
- 19-inch rack-mountable metal case, Internal universal power supply

**Hardware Specification**

<b>Model Name</b>	FR-S2016PEM	
<b>Chipset</b>	IP1717+IP108+IP210W+2*PD69008	
<b>Standards and Protocols</b>	IEEE 802.3、IEEE 802.3u、IEEE 802.3x、IEEE 802.3af、IEEE 802.3at	
<b>Interface</b>	16*10/100Mbps RJ45 Ports (Auto Negotiation/Auto MDI/MDIX)	
<b>Network Media</b>	10BASE-T: UTP category 3, 4, 5 cable (maximum 100m) 100BASE-TX/1000BASE-T: UTP category 5, 5e or above cable (maximum 100m)	
<b>Transfer Method</b>	Store-and-Forward	
<b>MAC Address Table</b>	4K	
<b>Switching Capacity</b>	3.2Gbps	
<b>Packet Forwarding Rate</b>	2.38Mpps	
<b>Packet Buffer</b>	1.25Mbit	
<b>Jumbo Frame</b>	1.6KBytes	
<b>PoE Ports(RJ45)</b>	16* PoE ports compliant with 802.3at/af	
<b>Power Pin Assignment</b>	7/8(+),4/5(-)	
<b>PoE Budget</b>	240W	
<b>Indicators</b>	<b>Per Port</b>	Power
	<b>Per Device</b>	Link/Act, PoE
<b>Power Supply</b>	100-240VAC, 50/60Hz, 260W internal power	
<b>Dimensions ( W x D x H )</b>	440*208*44mm	
<b>Environment</b>	Operating Temperature: 0°C~40°C Storage Temperature: -40°C~70°C Operating Humidity: 10%~90% non-condensing Storage Humidity: 5%~90% non-condensing	