

## 8-Port 10/100Mbps+ 1-port Gigabit Ethernet Unmanaged PoE Switch FR-S1009PED-F

### Features

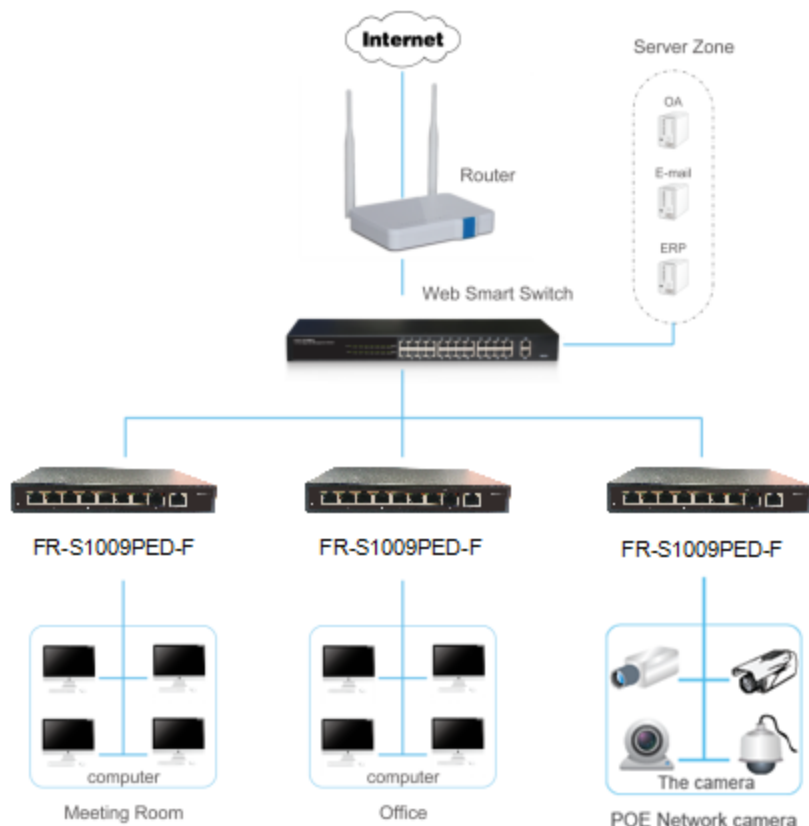
- 8-10/100Mbps PoE ports + 1 Gigabit ports
- Adopt the store - forwarding mode
- Switching Capacity 3.6Gbps
- Complied with IEEE802.3at/af
- Supports PoE power up to 30W for each PoE port, total power up to 60W for all PoE ports

### Description

FR-S1009PED-F is a 8-10/100Mbps PoE ports + 1-Uplink ports gigabit Unmanaged Ethernet Switch. This switch is a design of high integration level, exquisite, easy to operate, which is suitable for the small and medium office and home network. The switch provide you with a simple, economic, standard and high performance of network application .

These PoE ports can automatically detect and supply power with those IEEE 802.3at/af compliant Powered Devices (PD). In this situation, the electrical power is transmitted along with data in one single cable allowing you to expand your network where there are no power lines or outlets, where you wish to fix devices such as AP, IP Cameras or IP Phones, etc.

### Application



## Features

- Comply with IEEE 802.3i, IEEE 802.3u, IEEE802.3x, IEEE802.3ab Ethernet standards
- Supports IEEE802.3at/af PoE standards
- Supports PoE power up to 30W for each PoE port, total power up to 60W for all PoE ports
- 4K MAC address table of the switch with auto-learning and auto-aging
- Supports IEEE802.3x flow control for Full-duplex mode and backpressure for Half-duplex mode
- Support packet length 9216 bytes jumbo frame packet forwarding at wire speed
- All ports support Auto MDI/MDI-X Ethernet
- LED indicators for monitoring PSE, Link / Activity

## Specification

<b>Model Name</b>		FR-S1009PED-F
<b>Chipset</b>		RTL8310SR-CG+RTL8201-VB-CG+2*IP804
<b>Standards and Protocols</b>		IEEE 802.3i,IEEE 802.3u,IEEE 802.3ab,IEEE 802.3x,IEEE 802.3at,IEEE 802.3af
<b>Interface</b>		8 x 10/100Mbps (Auto MDI/MDIX) 1 x 1000Mbps Uplink ports (Auto MDI/MDIX)
<b>Network Media</b>		10BASE-T: UTP category 3 or above cable (maximum 100m) 100BASE-TX: UTP category 5,5e cable (maximum 100m) 1000Base-T: UTP category 5, 5e,6 cable (maximum 100m)
<b>Transfer Method</b>		Store-and-Forward
<b>MAC Address Table</b>		4K
<b>Switching Capacity</b>		3.6Gbps
<b>Packet Forwarding Rate</b>		2.68Mbps
<b>Packet Buffer</b>		1.5Mbit
<b>Jumbo Frame</b>		9216Byte
<b>PoE Ports(RJ45)</b>		8* PoE ports compliant with 802.3at/af
<b>Power Pin Assignment</b>		4/5(+),7/8(-)
<b>PoE Budget</b>		60W
<b>Indicators</b>	<b>Per Device</b>	Power(Green)
	<b>Per Port</b>	Link/Activity(Green),PoE(Yellow)
<b>Power &amp; Consumption</b>		Power adapter:53.5V/1.2A(DC); Maximum: 63.43 W(DC)
<b>Dimensions (L×W×H)</b>		L190*W100*H28mm
<b>Environment</b>		Operating Temperature: 0℃~40℃ Storage Temperature: -40℃~70℃ Operating Humidity: 10%~95% non-condensing Storage humidity: 5%~95% non-condensing