



5-Port 10/100Mbps Ethernet Unmanaged PoE Switch(4-Port PoE)

FR-S1005PED-F

Description

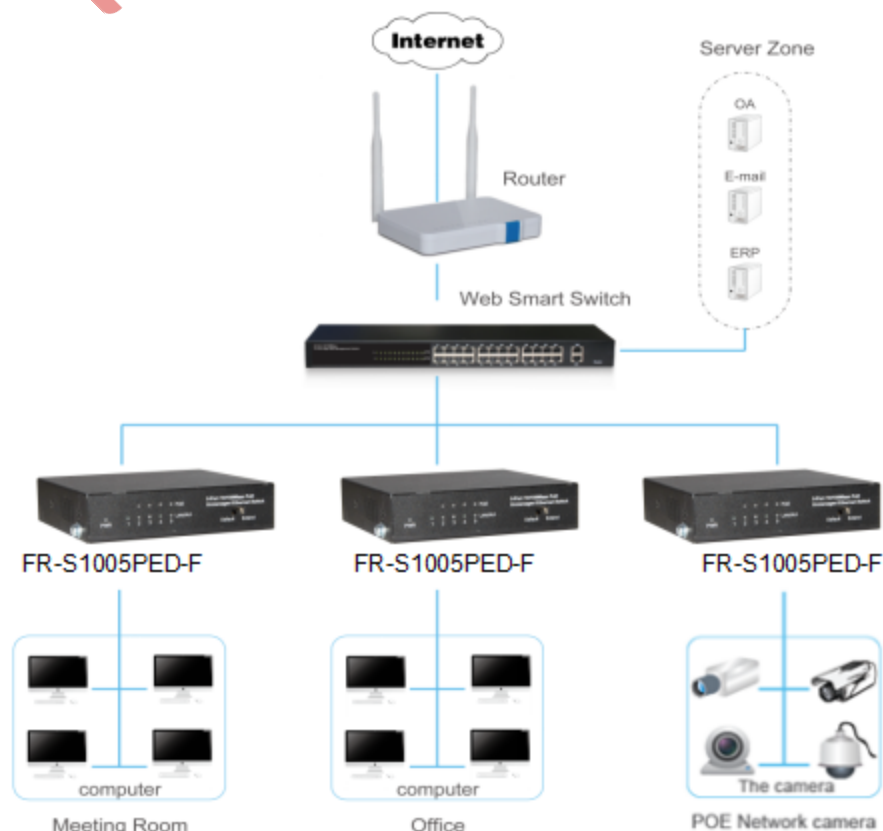
FR-S1005PED-F is a 5-port 10/100M Desktop PoE Switch provides the seamless network connection. It integrates 100Mbps Fast Ethernet and 10Mbps Ethernet network capabilities. These PoE ports can automatically detect and supply power with those IEEE 802.3at compliant Powered Devices (PDs). It can through the front panel of the slide switch to switch working mode when switch to Extend mode,2-5 port rate negotiation into 10 Mbps,Data transmission and power supply can reach as far as 250 meters.

FR-S1005PED-F is easy to install and use. It requires no configuration and installation. With desktop design, outstanding performance and quality, the 5-port 10/100 Desktop PoE Switch is a great selection for expanding Video Surveillance or wireless AP.

Characteristics

- Complied with IEEE802.3at backward compatibility IEEE802.3af
- Comply with IEEE 802.3i, IEEE 802.3u,IEEE802.3x , IEEE802.1a standards
- Flow control: Full Duplex use IEEE 802.3x standard,Half Duplex use Backpressure standard
- Supports PoE power up to 30W for each PoE port, total 60W for all PoE ports
- Default/Extend mode switch
- Built-in surge protection circuit(reserved design)
- Switching Capacity 1G
- Adopt the store - forwarding mode

The application of topology



Features

- Comply with IEEE 802.3i, IEEE 802.3u, IEEE802.3x , IEEE802.3az standards;
- Supports IEEE802.3af 、 IEEE802.3at standards,PoE power up to 30W for each PoE port, all power up to 60W;
- Default/Extend mode(PoE port rate of 10 Mbps, the farthest distance is 250 m) switch
- Support 5 x10/100Mbps Auto-negotiation Fast Ethernet RJ45 ports with 4 port PoE function (port2-port5);
- Supports IEEE802.3x flow control for Full-duplex Mode and backpressure for Half-duplex Mode;
- 1K entry MAC address table of the switch with auto-learning and auto-aging;
- Supports 6KV Surge Immunity for all UTP ports(reserved design);
- LED indicators for monitoring PoE, Link / Activity;
- External power supply, exquisite design, suitable for desktop install and use.

Hardware Specification

Model Name	FR-S1005PED-F	
Chipset	IP175G+IP804A	
Standards and Protocols	IEEE802.3i 、 IEEE802.3u 、 IEEE802.3x 、 IEEE802.3az 、 IEEE802.3at 、 IEEE802.3af	
Interface	5 x 10/100Mbps Auto-Negotiation ports	
Mode switch	Defalut mode:1-5 port speed rate 100 Mbps,communicate with each other Extend mode:1port speed rate 100Mbps,2-5 PoE port rate of 10 Mbps, the farthest distance is 250m,communicate with each other	
Network Media	10Base-T: UTP 5e and above cable (maximum 250m) 100Base-Tx: UTP category 5, 5e cable (maximum 100m)	
Transfer Method	Store-and-Forward	
MAC Address Table	1K	
Switching Capacity	1Gbps	
Packet Forwarding Rate	0.744Mpps	
PoE Ports(RJ45)	4* PoE ports compliant with 802.3at/af	
Power Pin Assignment	4/5(+),7/8(-)	
PoE Budget	60W	
Indicators	Per Device	Power
	Per Port	Link/Activity,PoE
Power Supply	DC 53.5V,1.2A External Power	
Power Consumption	Maximum(PoE on): 66.5W (220V/50Hz)	
Dimensions (W x D x H)	89.3*81.7*21.3mm	
Environment	Operating Temperature: 0°C~45°C Storage Temperature: -40°C~70°C Operating Humidity: 10%~90% non-condensing Storage humidity: 5%~90% non-condensing	