

48-Port Gigabit+2-Port Gigabit SFP Multi-Mode Unmanaged Switch

FR-S1150GS

Characteristic

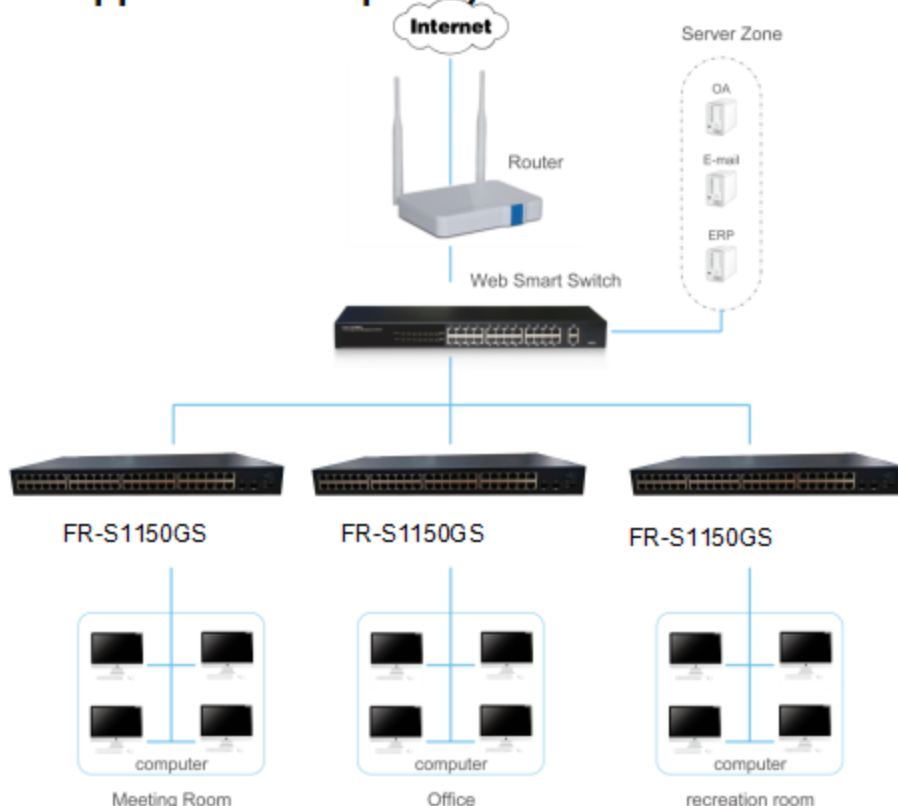
- 48 x 10/100/1000Mbps Auto MDI/MDI-X Ethernet port
- 2*1000Mbps SFP ports
- Switching Capacity up to 100G
- Store and forward mode operates
- Support multiple mode switching, suitable for various occasions

Description

FR-S1150GS is 48 ports 10/100/1000Mbps+2-ports gigabit sfp Ethernet Switch. The switch provides the seamless network connection. This device integrates 1000Mbps Gigabit Ethernet, 100Mbps Fast Ethernet and 10Mbps Ethernet network capabilities in a highly flexible package. With 48-10/100/1000Mbps Auto-Negotiation RJ45 ports, all UTP ports support Auto MDI/MDIX function. The Switch with a low-cost, easy-to-use, high performance upgrade your old network to a 1000Mbps Gigabit network. Support normal working mode, trun off flow control mode, port isolation (VLAN) mode, you can choose the working mode through the toggle switch. It is essential to helping solve network bottlenecks that frequently develop as more advanced computer user and newer applications continue to demand greater network resources.

The switch is easy to install and use. It requires no configuration and installation. It is a great selection for office network.

The application of topology



● 48-Port Gigabit+2-Port Gigabit SFP Multi-Mode Unmanaged Switch FR-S1150GS

Features

- Comply with IEEE802.3i, IEEE802.3u, IEEE802.3ab, IEEE802.3x, IEEE802.3z, IEEE802.3ad standards
- Supports IEEE802.3x flow control for Full-duplex Mode and backpressure for Half-duplex Mode
- Supports MAC address auto-learning and auto-aging
- Store and forward mode operates
- Supports normal working mode, turn off flow control mode, port isolation (VLAN) mode
- Supports IEEE802.1Q VLAN, 4K VLAN Table
- LED indicators for monitoring power, link/activity, Speed
- Internal power adapter supply

Specification

Model Name		FR-S1150GS
Chipset		RTL8393M+6*RTL8218B+RTL8214FC+3*RTL8231
Standards and Protocols		IEEE802.3i、IEEE802.3u、IEEE802.3ab、IEEE802.3z、IEEE802.3x、IEEE802.3ad、IEEE802.1Q、IEEE802.1P
Interface		48*10/100/1000Mbps Auto-Negotiation RJ45 Ports 2x 1000Mbps SFP ports
Network Media		10BASE-T: UTP category 3, 4, 5 cable (maximum 100m) 100BASE-TX/1000BASE-T: UTP category 5, 5e or above cable (maximum 100m) 1000Base-SX: 62.5µm/50µm MMF(2m~550m) 1000Base-LX: 62.5µm/50µm MMF(2m~550m) Or 10µm SMF (2m~5000m)
Transfer Method		Store-and-Forward
MAC Address Table		16K
Switching Capacity		100Gbps
Packet Forwarding Rate		74.4Mpps
Packet Buffer		12Mbit
Jumbo Frame		9KBytes
Mode	Normal mode	all ports can communicate with each other
	turn off Flow control mode	turn off all ports flow control function, all ports can communicate with each other
	Port isolation mode	1 to 46 can not communicate with each other, but can communicate with 47-48 port and SFP1-SFP2
indicators	Per Device	Power
	Per Port	Link/Activity/Speed
Power Supply		100-240VAC, 50/60Hz
Power Consumption		Maximum AC Power consumption : 34.6W(220V/50Hz)
Dimensions (W x D x H)		440*208*44mm
Environment		Operating Temperature: 0°C ~ 45°C Storage Temperature: -40°C ~ 70°C Operating Humidity: 10%~90% non-condensing Storage humidity: 5%~90% non-condensing