

8-Port Gigabit+2-Port Gigabit SFP Ethernet Unmanaged Switch

FR-S1110GS

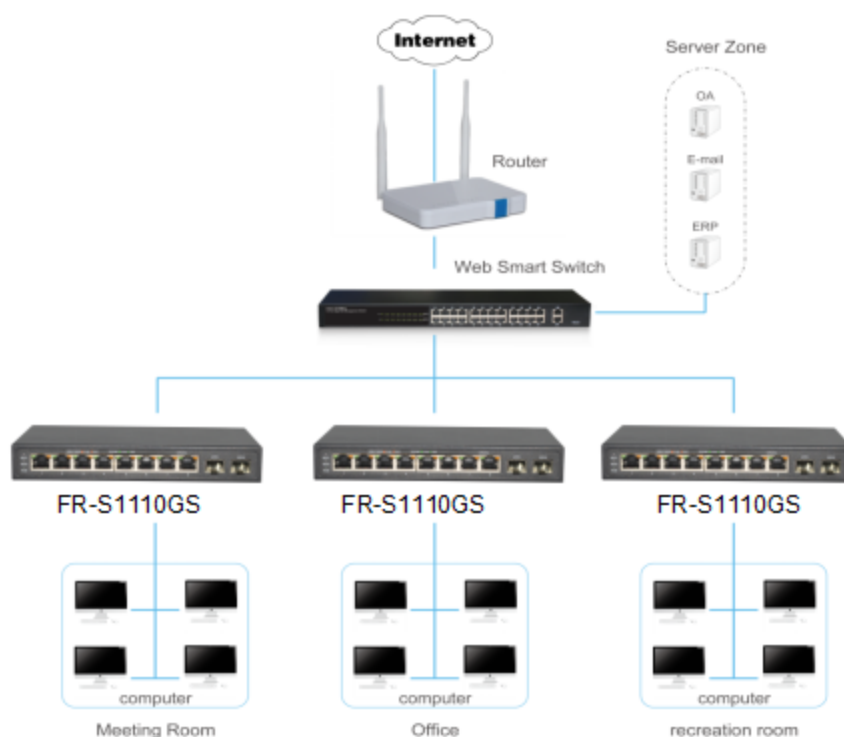
Description

FR-S1110GS is 8 ports 10/100/1000Mbps + 2 ports 100/1000Mbps SFP Slots Unmanaged Ethernet Switch. This switch is a design of high integration level, exquisite, portable, easy to operate, which is suitable for the small and medium office and home network. The switch provide you with a simple, economic, standard and high performance of network application plan, it is ideal choice to promote the department and working group performance. It provide simple and understood LED indicator light on the front panel, so that you can quickly judge the working state of the switch, and help to diagnose the network failure.

Features

- 2*1000Mbps SFP ports
- External Power supply ,high performance, durable stability
- Adopt the store - forwarding mode
- Switching Capacity 20Gbps

Application



Features

- Comply with IEEE 802.3, IEEE 802.3u, IEEE802.3x, IEEE802.3ab standards
- Support ports Auto MDI/MDIX
- 4K entry MAC address table of the switch with auto-learning and auto-aging
- Supports IEEE802.3x flow control for Full-duplex Mode and backpressure for Half-duplex Mode
- Support packet length 9216 bytes jumbo frame packet forwarding at wire speed
- 8 x 10/100/1000Mbps Auto MDI/MDI-X Ethernet port
- Two 1000Mbps SFP Slots
- LED indicators for monitoring Link / Activity/Speed

Specification

Model Name	FR-S1110GS	
Chipset	RTL8370MB+RTL8231	
Standards and Protocols	IEEE 802.3、IEEE 802.3u、IEEE 802.3ab、IEEE 802.3x、IEEE 802.3z	
Interface	8 x 10/100/1000Mbps Auto-Negotiation ports 2x1000Mbps SFP ports	
Network Media	10BASE-T: UTP category 3, 4, 5 cable (maximum 100m) 100BASE-Tx: UTP category 5, 5e cable (maximum 100m) 1000Base-T: UTP category 5e, 6 cable (maximum 100m) 1000Base-SX: 62.5μm/50μm MMF(2m~550m) 1000Base-LX: 62.5μm/50μm MMF(2m~550m) Or 10μm SMF (2m~5000m)	
Transfer Method	Store-and-Forward	
MAC Address Table	4K	
Switching Capacity	20Gbps	
Buffer	1.5Mbit	
Packet Forwarding Rate	14.88Mpps	
Jumbo Frame	9216Bytes	
LED indicators	Per Device	Power
	Per Port	Link/Activity/Speed
Power Supply	12V 1A External Power Supply	
Power Consumption	Maximum: 5.78W (220V/50Hz)	
Dimensions (W x D x H)	190*100*28mm	
Environment	Operating Temperature: 0°C~45°C Storage Temperature: -40°C~70°C Operating Humidity: 10%~90% non-condensing Storage humidity: 5%~90% non-condensing	