

## 16-Port Gigabit + 2-Port Gigabit SFP Ethernet Unmanaged Switch FR-S1018GF-E



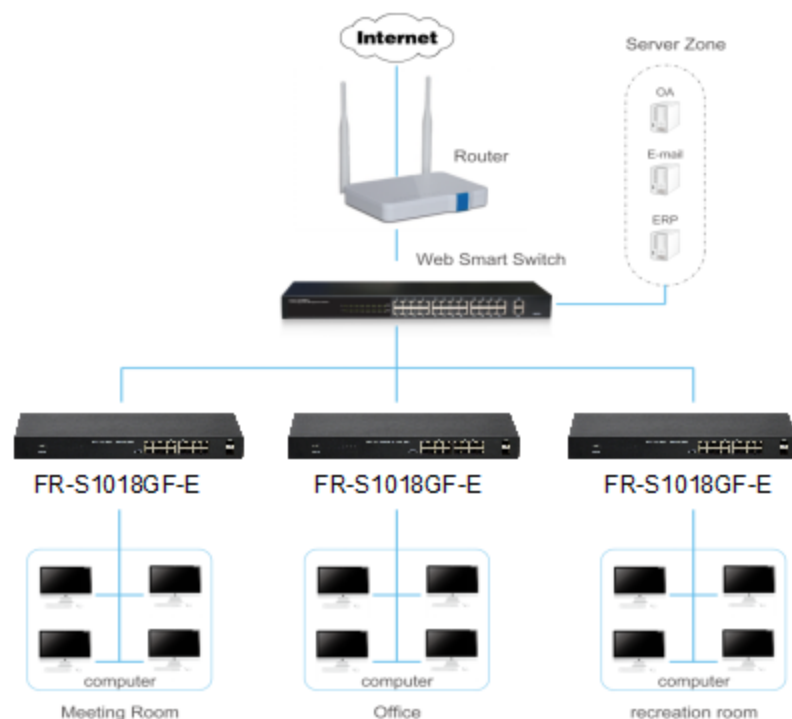
### Characteristic

- 16 x 10/100/1000Mbps Auto MDI/MDI-X Ethernet port
- Two 1000Mbps SFP Slots
- Flow control function can be controlled via a button
- Switching Capacity up to 36G
- Support IEEE802.3az energy efficient Ethernet (EEE)

### Description

FR-S1018GF-E 16port 10/100/1000Mbps + 2SFP Slots Ethernet Switch provides the seamless network connection. This device integrates 1000Mbps Gigabit Ethernet, 100Mbps Fast Ethernet and 10Mbps Ethernet network capabilities in a highly flexible package. The Switch with a low-cost, easy-to-use, high performance upgrades your old network to a 1000Mbps Gigabit network. Based on Gigabit Ethernet Technology, It is essential to helping solve network bottlenecks that frequently develop as more advanced computer users and newer applications continue to demand greater network resources. Support IEEE802.3az energy efficient Ethernet (EEE), reduce power consumption by detection cable length and operating loading, auto adjust signal intensity, Reduce energy consumption, and protect the environment. The switch is easy to install and use. It requires no configuration and installation. It is a great selection for expanding office network.

### The application of topology



**16-Port Gigabit + 2-Port Gigabit SFP  
Ethernet Unmanaged Switch**

**FR-S1018GF-E**

**Features**

- Comply with IEEE 802.3, IEEE 802.3u, IEEE802.3x, IEEE802.3ab, IEEE802.3az standards
- Supports up to 8K MAC address
- Supports IEEE802.3x flow control for Full-duplex Mode and backpressure for Half-duplex Mode
- Flow control function can be controlled via a button
- Support packet length 9216 bytes jumbo frame packet forwarding at wire speed
- 16 x 10/100/1000Mbps Auto MDI/MDI-X Ethernet port
- Two 1000Mbps SFP Slots
- LED indicators for monitoring power, link/activity/speed

**Specification**

Model	FR-S1018GF-E	
Chipset	RTL8382L+RTL8218B+2*RTL8231	
Standards	IEEE 802.3i, IEEE 802.3u, IEEE802.3ab, IEEE802.3x, IEEE802.3az	
Number of Ports	16x 10/100/1000Mbps RJ45 Ports (Auto Negotiation/Auto MDI/MDIX) 2x 1000Mbps SFP	
Network Media (Cable)	10Base-T: UTP category 3,4,5 cable (maximum 100m) 100Base-Tx: UTP category 5,5e cable (maximum 100m) 1000Base-T: UTP category 5e,6 cable (maximum 100m) 1000Base-SX: 62.5µm/50µm MMF(2m~550m) 1000Base-LX: 62.5µm/50µm MMF(2m~550m)Or 10µm SMF ( 2m~5000m)	
Transfer Method	Store-and-Forward	
Switching Capacity	36Gbps	
Packet Forwarding Rate	26.784Mbps	
Packet Buffer	4.1Mbit	
MAC Address Table	8K	
Jumbo Frame	9KByte	
LED indicators	Per-Port	10M/100M Link/ACT: Orange 1000M Link/ACT: Green
	Other	Power : Green
Power Supply	AC 100-240V/50-60Hz 12V/1.5A internal power	
Power Consumption	Maximum: 11W(220V/50Hz)	
Dimensions ( W x D x H )	440*208*44mm	
Environment	Operating Temperature: 0°C~45°C Storage Temperature: -40°C~70°C Operating Humidity: 10%~90% RH non-condensing Storage Humidity: 5%~90% RH non-condensing	