

## 16-Port Gigabit Multi-Mode Ethernet Unmanaged Switch

FR-S1016GD-L



### Characteristic

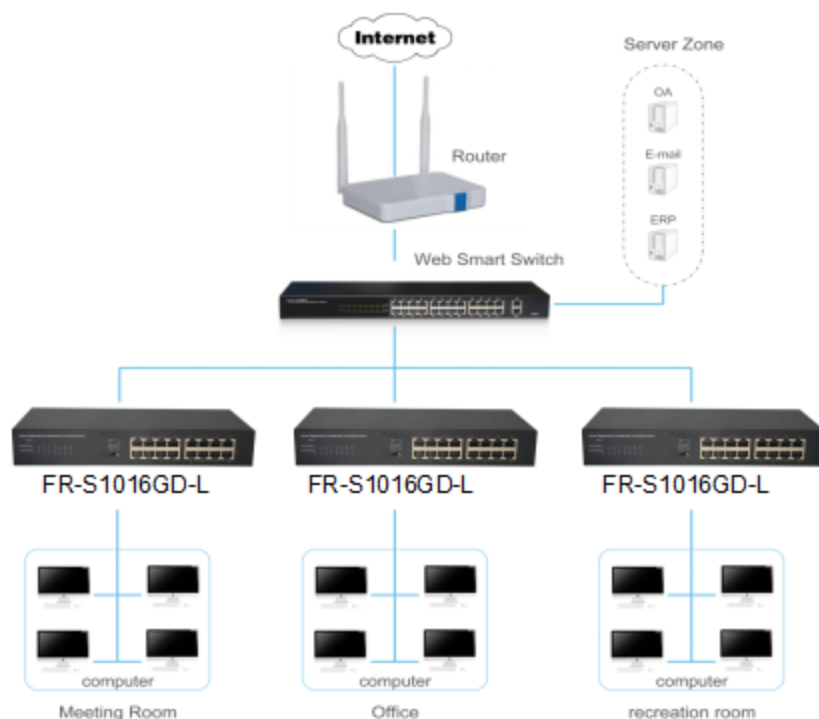
- Intelligent identification
- High performance, durable stability
- Support multiple mode switching, suitable for various occasions
- Adopt the store - forwarding mode
- Switching Capacity 32Gbps

### Description

The FR-1016GD-L 16 Port 10/100/1000Mbps gigabit Ethernet Switch provides the seamless network connection. This device integrates 1000Mbps Gigabit Ethernet, 100Mbps Fast Ethernet and 10Mbps Ethernet network capabilities in a highly flexible package. Based on Gigabit Ethernet Technology, It is essential to helping solve network bottlenecks that frequently develop as more advanced computer users and newer applications continue to demand greater network resources. Support normal working mode, trunk off flow control mode, port isolation (VLAN) mode and network extend mode, you can choose the working mode through the toggle switch. Support IEEE802.3az energy efficient Ethernet (EEE), reduce power consumption by detection cable length and operating loading, auto adjust signal intensity, Reduce energy consumption, protect the environment.

The product is highly integrated design, simple operation, a variety of models optional, suitable for a variety of applications.

### The application of topology



## Features

- Comply with IEEE 802.3i、IEEE 802.3u、IEEE 802.3ab、IEEE 802.3x、IEEE 802.3az standards
- 16\*10/100/1000Mbps Auto-Negotiation Ethernet port,Support Auto-MDI/MDIX for each port
- Supports normal working mode,turn off flow control mode, port isolation (VLAN) mode, network extend mode
- Supports IEEE802.3x flow control for Full-duplex Mode and backpressure for Half-duplex Mode
- Support Store-and-Forward
- Support 8K MAC addresses
- LED indicators for monitoring power, link and activity

## Specification

Model	FR-S1016GD-L	
Chipset	RTL8382L+RTL8218B-VC-CG+RTL8231	
Standards	IEEE 802.3i、IEEE 802.3u、IEEE 802.3ab、IEEE 802.3x、IEEE 802.3az	
Number of Ports	16 x 10/100/1000Mbps Auto-Negotiation ports	
Network Media (Cable)	10Base-T: UTP category 3,4,5 cable (maximum 100m) 100Base-Tx: UTP category 5,5e cable (maximum 100m) 1000Base-T:UTP category 5e,6 cable (maximum 100m)	
Transfer Method	Store-and-Forward	
MAC Address Table	8K	
Switching Capacity	32Gbps	
Packet Forwarding Rate	23.81Mbps	
Packet Buffer	4.1 Mbit	
Jumbo Frame	9216 bytes	
mode	Normal mode	all ports can communicate with each other
	turn off Flow control mode	turn off all ports flow control fuction, all ports can communicate with each other
	Port isolation mode	1 to 14 can not communicate with each other, but can communicate with 15-16 port
	Network extension mode	1 to 8 port rate reduced to 10Mbps, the farthest transmission distance can up to 250 meters, all ports can communicate with each other
LED indicators	Per-Port	10M/100M Link/ACT: Orange 1000M Link/ACT: Green
	Per Device	Power : Green
Power Supply	100-240VAC 50/60Hz	
Power Consumption	Maximum: 10.1W(220V/50Hz)	
Dimensions ( W x D x H )	280*126*44mm	
Environment	Operating Temperature: 0°C ~ 40°C Storage Temperature: -40°C ~70°C Operating Humidity: 10%~90% non-condensing Storage humidity: 5%~90% non-condensing	