

24-Port Gigabit + 4-Port Gigabit Combo Base-T/SFP L2 Managed Switch

FR-S3128GC



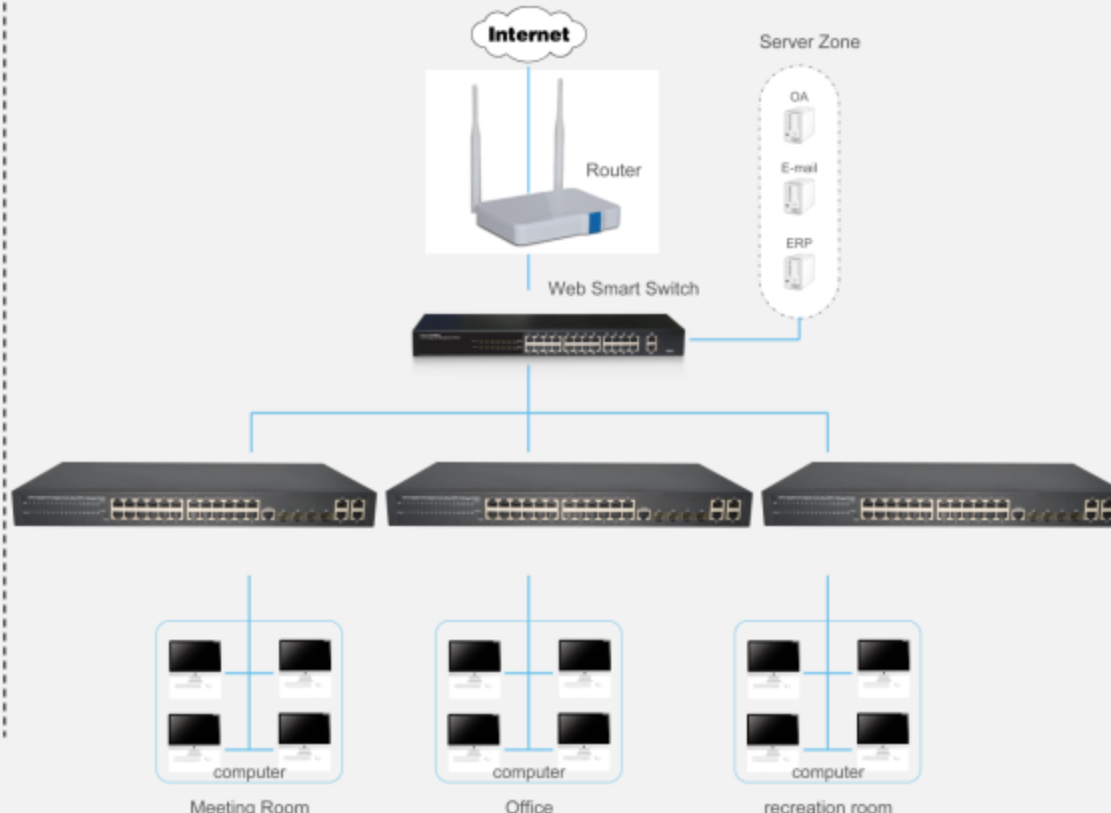
characteristics

- 24 x 10/100/1000Mbps Auto MDI/MDI-X Ethernet port , Four Combo ports
- Switching Capacity up to 56G
- Store and forward mode operates
- Support Web-based Management

Description

FR-S3128GC is a high performance the second managed gigabit switch. Provides twenty-four 10/100/1000Mbps self-adaption RJ45 ports, plus four gigabit Combo ports, it can be used to link bandwidth higher upstream equipment. Support VLAN ACL based on port, easily implement network monitoring, traffic regulation, priority tag and traffic control. Support traditional STP/RSTP/MSTP 2 link protection technology; greatly improve the ability of fault tolerance, redundancy backup to ensure the stable operation of the network. Support ACL control based on the time, easy control the access time accurately. Support 802.1x authentication based on the port and MAC, easily set user access. Perfect QOS strategy and plenty of VLAN function, easy to maintenance and management, meet the networking and access requirements of enterprises, intelligent village, hotel, office network and campus network. Built-in high reliability, de-sign for wide voltage input application power supply, even if the voltage is not stable of power grid, also can guarantee the equipment can work normally.

Application of topology



**24-Port Gigabit + 4-Port Gigabit Combo
Base-T/SFP L2 Managed Switch**

FR-S3128GC

Features

- Comply with IEEE802.3i, IEEE802.3u, IEEE802.3ab, IEEE802.3x, IEEE802.3z, IEEE802.3ad standards
- Supports IEEE802.3x flow control for Full-duplex Mode and backpressure for Half-duplex Mode
- Supports MAC address auto-learning and auto-aging
- Store and forward mode operates
- Support SNMP/RMON/TELENT
- Supports IEEE802.1Q VLAN, 4K VLAN Table
- Support IEEE802.1p Priority Queues
- Support 2K+256-entry ingress and egress ACL
- Support Storm Control
- Support QoS, Port Mirroring, Link Aggregation Protocol
- LED indicators for monitoring power, link/activity, Speed
- Web-based Management Support
- Internal power adapter supply

Hardware Specification

Model	FR-S3128GC
Chipset	RTL8382M+2*RTL8218B-VC+RTL8214FC+3*RTL8231
Standards	IEEE 802.3i, IEEE 802.3u, IEEE 802.3ab, IEEE802.3x, IEEE802.3z, IEEE802.3ad, IEEE802.1P, IEEE802.1Q
Network Media (Cable)	10BASE-T: UTP category 3,4,5 cable (maximum 100m) 100BASE-Tx: UTP category 5,5e cable (maximum 100m) 1000BASE-T: UTP category 5e,6 cable (maximum 100m) 1000Base-SX: 62.5µm/50µm MMF (2m~550m) 1000Base-LX: 62.5µm/50µm MMF (2m~550m) or 10µm SMF (2m~5000m)
Transfer Method	Store-and-Forward
Switching Capacity	56Gbps

● **24-Port Gigabit + 4-Port Gigabit Combo
Base-T/SFP L2 Managed Switch**

FR-S3128GC

Packet Forwarding Rate		41.66Mbps
Packet Buffer		4.1Mbit
MAC Address Table		8K
Jumbo Frame		9KByte
Number of Ports		24 x 10/100/1000Mbps Auto-Negotiation ports 4 x Gigabit Combo ports 1 x RJ45 Console Port
LED indicators	Per port	10/100Mbps Link/Act/Speed:Orange 1000Mbps Link/Act/Speed: Green
	Per Device	Power: Green SYS:Green
Power Supply		AC 100-240V/50-60Hz internal power
Power Consumption		Maximum:20W(220V/50Hz)
Dimensions (W x D x H)		440*208*44mm
Environment		Operating Temperature: 0°C - 45°C Storage Temperature: -40°C - 70°C Operating Humidity: 10%~90% RH non-condensing Storage humidity: 5%~90% RH non-condensing

Software Specification

System	IP Configuration(IPV4、IPV6)
	User Configuration
	Time Settings(SNTP)
	Log Management
	SNMP Management(V1,V2C,V3)
	RMON(1,2,3,9)
Port	Port Configuration
	Link Aggregation(static、Lacp)
	Port Mirroring
	Jumbo Frame
	Port Security
Vlan	Port based VLAN,Private VLAN
	MAC based VLAN
	Voice VLAN
	Gvrp
IGMP	IGMP Snooping (V2、V3)
	Multicast Group (256)
STP	IEEE 802.1D STP
	IEEE 802.1W RSTP
	IEEE 802.1S MSTP
Security	Broadcast / Uncast / Multicast Storm Control
	IEEE 802.1x, Radius,TACACS+
	DHCP Snooping/DHCP Relay
	DHCP Server
	ERPS
	IP Source Guard
	ARP Check
	DAI
ACL	MAC-Based ACL
	MAC-Based ACE
	IPv4-Based ACL
	IPv4-Based ACE
QoS	WRR (Weighted Round Robin)
	Port based QoS
	IEEE 802.1p Class of Service
	DSCP-based QoS
	QoS basic mode
	QoS advanced mode (Policy based)
Bandwidth Control	Ingress Port
	Ingress VLAN
	Egress Port
	Egress Queue
MAC Address Setting	Static Mac Setting
	MAC Filtering
	Dynamic Address Learn/Setting

● 24-Port Gigabit + 4-Port Gigabit Combo
Base-T/SFP L2 Managed Switch

FR-S3128GC

PoE	Global Configuration
	Port Configuration
	PoE Delay/PoE Restart
	PoE Monitor
	RMON (1,2,3,9)
LLDP	LLDP Port Configuration
	MED Network Porxy
Management	System information
	Ping Test /Traceroute
	Factory default
	Backup/upgrade Management
	Configuration Management

FULLRIVER
Link our dreams