

8-Port Gigabit + 2-Port Gigabit SFP L2 Managed Switch FR-S3110GS



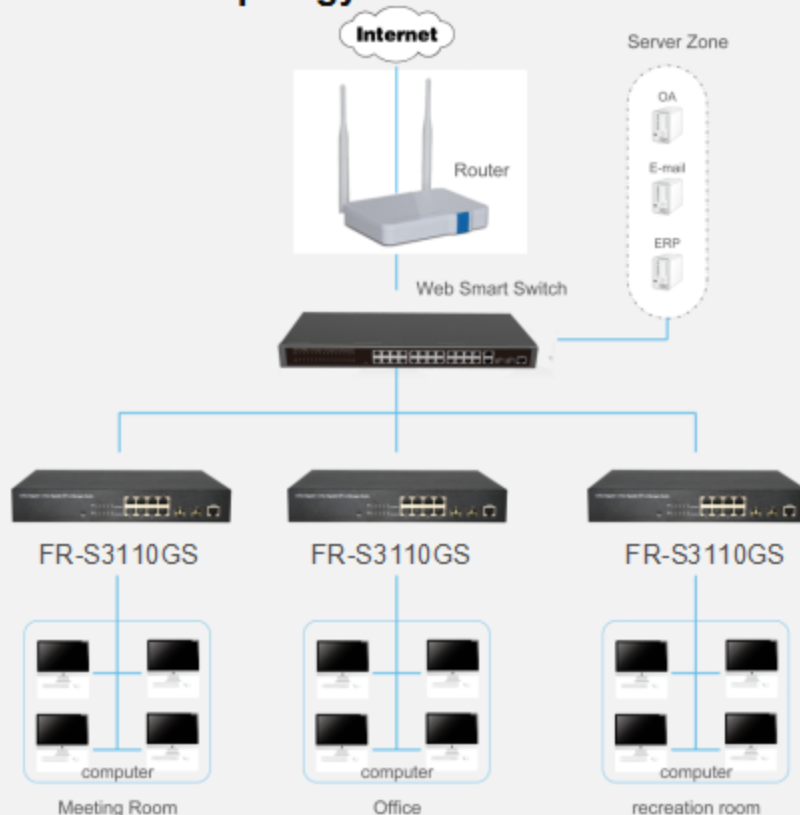
characteristics

- Intelligent identification
- High performance, durable stability
- Adopt the store - forwarding mode
- Auto MDI/MDIX
- Support web interface management
- Switching Capacity up to 20Gb

Description

FR-S3110GS is a L2 managed switch. Provides 8*10/100/1000Mbps self-adaption RJ45 port, and 2*100/1000Mbps SFP ports, all ports support wire-speed forwarding, can provide you with larger network flexibility. All ports support Auto MDI/MDIX function. The Switch with a low-cost, easy-to-use, high performance upgrade your old network to a 1000Mbps Gigabit network. Support VLAN ACL based on port, easily implement network monitoring, traffic regulation, priority tag and traffic control. Support traditional STP/RSTP/MSTP 2 link protection technology; greatly improve the ability of fault tolerance, redundancy backup to ensure the stable operation of the network. Support ACL control based on the time, easy control the access time accurately. Support 802.1x authentication based on the port and MAC, easily set user access. Perfect QOS strategy and plenty of VLAN function, easy to maintenance and management, meet the networking and access requirements of small and medium-sized enterprises, intelligent village, hotel, office network and campus network.

Application of topology



L2



Features

- Comply with IEEE802.3i, IEEE802.3u, IEEE802.3ab, IEEE802.3x, IEEE802.3z, IEEE802.3ad, IEEE802.1P, IEEE802.1Q standards
- Supports IEEE802.3x flow control for Full-duplex Mode and backpressure for Half-duplex Mode
- Supports MAC address auto-learning and auto-aging
- 8*10/100Mbps Auto-negotiation RJ45 Port, 2*100/1000Mbps SFP Port, Support Auto MDI/MDIX and Auto-negotiation function, Auto to option transmission mode and speed
- Store and forward mode operates
- Support SNMP/RMON/TELENT
- Support Storm Control, QoS, Port Mirroring, Link Aggregation Protocol
- LED indicators for monitoring power, link/activity, Speed
- Internal power adapter supply, Ingenious structural design, Suitable for use

Hardware Specification

Model		FR-S3110GS
Chipset		RTL8380M+2*RTL8231
Standards		IEEE 802.3i, IEEE 802.3u, IEEE 802.3ab, IEEE802.3x, IEEE802.3z, IEEE802.3ad, IEEE802.1P, IEEE802.1Q
Network Media		10BASE-T: UTP category 3,4,5 cable (maximum 100m) 100BASE-Tx: UTP category 5,5e cable (maximum 100m) 1000BASE-T: UTP category 5e,6 cable (maximum 100m) 1000Base-SX:62.5µm/50µm MMF(2m~550m) 1000Base-LX:62.5µm/50µm MMF(2m~550m) or 10µm SMF (2m~5000m)
Transfer Method		Store-and-Forward
Switching Capacity		20Gbps
Packet Forwarding Rate		14.88Mbps
Packet Buffer		4.1Mbit
MAC Address Table		8K
Number of Ports		8 x 10/100/1000Mbps Auto-Negotiation ports 2 x100/1000Mbps SFP port 1 xConsole port
LED indicators	Per Device	Power: Green. System: Green
	Per Port	Link/Act/Speed: Green(1000Mbps)/Orange(100/10Mbps)
Power Supply		AC 100-240V/50-60Hz 12/1.5A internal power
Power Consumption		Maximum: 7.35W(220V/50Hz)
Dimensions (W x D x H)		280*180*44mm
Environment		Operating Temperature: 0°C - 45°C Storage Temperature: -40°C - 70°C Operating Humidity: 10%~90% RH non-condensing Storage humidity: 5%~90% RH non-condensing

Software Specification

System	IP Configuration(IPV4、IPV6)
	User Configuration
	Time Settings(SNTP)
	Log Management
	SNMP Management(V1,V2C,V3)
	RMON(1,2,3,9)
Port	Port Configuration
	Link Aggregation(static、Lacp)
	Port Mirroring
	Jumbo Frame
Vlan	Port based VLAN,Private VLAN
	MAC based VLAN
	Voice VLAN
	Gvrp
IGMP	IGMP Snooping (V2、V3)
	Multicast Group (256)
STP	IEEE 802.1D STP
	IEEE 802.1W RSTP
	IEEE 802.1S MSTP
Security	Broadcast / Uncast / Multicast Storm Control
	IEEE 802.1x, Radius,TACACS+
	DHCP Snooping/DHCP Relay
	DHCP Server
	ERPS
	IP Source Guard
	ARP Check
	DAI
ACL	MAC-Based ACL
	MAC-Based ACE
	IPv4-Based ACL
	IPv4-Based ACE
QoS	WRR (Weighted Round Robin)
	Port based QoS
	IEEE 802.1p Class of Service
	DSCP-based QoS
	QoS basic mode
	QoS advanced mode (Policy based)
Bandwidth Control	Ingress Port
	Ingress VLAN
	Egress Port
	Egress Queue
MAC Address Setting	Static Mac Setting
	MAC Filtering
	Dynamic Address Learn/Setting

● 8-Port Gigabit + 2-Port Gigabit SFP L2 Managed Switch

FR-S3110GS

LLDP	LLDP Port Configuration
	MED Network Porxy
Management	System information
	Ping Test /Traceroute
	Factory default
	Backup/upgrade Management
	Configuration Management