



## 48-Port Gigabit + 4-Port 10 Gigabit SFP+ L3 Managed Ethernet Switch

FR-S3052TF-D

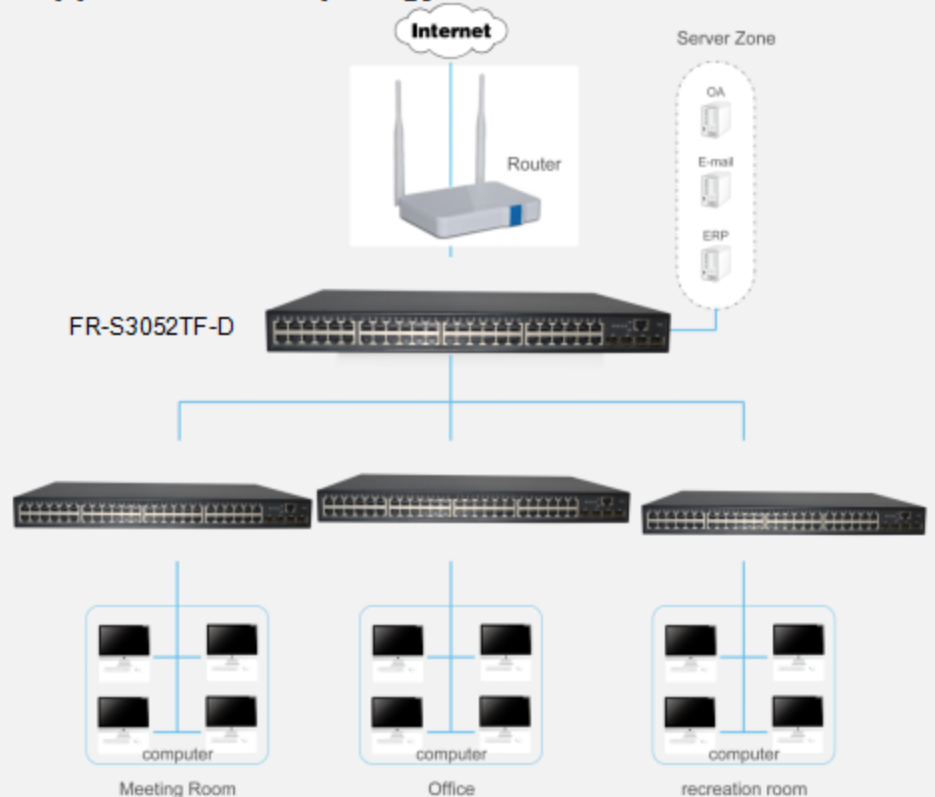
### Characteristics

- The L3 managed 10G switch
- Four 10 gigabit fiber port
- Fully integrated 1.5MB packet buffer
- Integrated High-Performance Cortex-A9 processor
- Internal power supply, high performance, durable stability
- Switching Capacity 176Gbps

### Description

FR-S3052TF-D is a high performance the L3 managed 10G switch. Provides four-eight 10/100/1000Mbps self-adaption RJ45 port, plus four 10 gigabit --1000/10000Mbps SFP+ optical port, it can be used to link bandwidth higher upstream equipment. Using store-and-forward technology, combined with dynamic memory allocation, ensure the bandwidth effective allocation to each port. Support VLAN ACL based on port, easily implement network monitoring, traffic regulation, priority tag and traffic control. Support traditional STP/RSTP/MSTP 2 link protection technology, greatly improve the ability of fault tolerance, redundancy backup to ensure the stable operation of the network. Support ACL control based on the time, easy control the access time accurately. Support 802.1x authentication based on the port and MAC, easily set user access. Perfect QoS strategy and plenty of VLAN function, easy to maintenance and management, meet the networking and access requirements of enterprises, intelligent village, hotel, office network and campus network. Built-in high reliability, de-sign for wide voltage input application power supply, even if the voltage is not stable of power grid, also can guarantee the equipment can work normally.

### The application of topology



L2+

QoS

## 48-Port Gigabit + 4-Port 10 Gigabit SFP+ L3 Managed Ethernet Switch FR-S3052TF-D

### Features

- Comply with IEEE 802.3i, IEEE 802.3u, IEEE 802.3ab, IEEE 802.3az, IEEE 802.3ae, IEEE802.3x, IEEE802.3z, IEEE802.3ad standards
- Supports IEEE802.3x flow control for Full-duplex Mode and backpressure for Half-duplex Mode
- Supports MAC address auto-learning and auto-aging
- Store and forward mode operates
- Support SNMP/RMON/TELENT
- Integrated High-Performance Cortex-A9 processor.
- Support IEEE802.1p Priority Queues
- Support low power consumption and energy saving (EEE), control the broadcast storm.
- Support Storm Control
- Support QoS、Port Mirroring、Link Aggregation Protocol
- Support manual reset function
- LED indicators for monitoring power, link/activity/speed
- Web-based Management Support
- Four-eight 10/100/1000Mbps self-adaption RJ45 port, plus four 1000/10000Mbps SFP+ port, it can be used to link bandwidth higher upstream equipment.
- Internal power adapter supply

### Hardware Specification

<b>Model</b>	FR-S3052TF-D
<b>Chipset</b>	2*BCM56150+2*B50282
<b>Standards</b>	IEEE 802.3i, IEEE 802.3u, IEEE 802.3ab, IEEE 802.3az, IEEE 802.3ae, IEEE802.3x, IEEE802.3z, IEEE802.3ad, IEEE802.1p, IEEE802.1Q
<b>Network Media (Cable)</b>	10BASE-T: UTP category 3,4,5 cable (maximum 100m) 100BASE-Tx: UTP category 5,5e cable (maximum 100m) 1000BASE-T:UTP category 5e,6 cable (maximum 100m) 1000Base-X:MMF,SMF 10GBase-X:MMF,SMF
<b>Interface</b>	48 x 10/100/1000Mbps Auto-Negotiation ports 4 x 1000/10000Mbps SFP+ port 1 x RJ45 Console Port
<b>Transfer Method</b>	Store-and-Forward
<b>Switching Capacity</b>	176G
<b>MAC Address Learning</b>	16K
<b>Packet Forwarding Rate</b>	130.944Mpps
<b>Packet Buffer</b>	1.5MBytes
<b>Jumbo Frame</b>	12KBytes

**48-Port Gigabit + 4-Port 10 Gigabit SFP+ L3 Managed Ethernet Switch**  
**FR-S3052TF-D**

<b>Indicators</b>	<b>Per Device</b>	Power,SYS
	<b>Per Port</b>	Link/Activity/Speed
<b>Power Supply</b>	100~240VAC,50/60HZ,48W, internal power	
<b>Power Consumption</b>	Maximum: 33.9W(220V/50Hz)	
<b>Dimensions (W×D×H)</b>	440x330x44.5mm (19" metal case)	
<b>Environment</b>	Operating Temperature: 0°C~45°C Storage Temperature: -40°C~70°C Operating Humidity: 10%~90% non-condensing Storage humidity: 5%~90% non-condensing	

**FULLRIVER**  
Link our dreams

**48-Port Gigabit + 4-Port 10 Gigabit SFP+ L3 Managed Ethernet Switch FR-S3052TF-D**

**Software Specification**

management	<ul style="list-style-type: none"> <li>● Support Telnet, SSH remote management</li> <li>● Support the SNMP</li> <li>● Support cluster with cluster network management</li> </ul>
Port features	<ul style="list-style-type: none"> <li>● Support port isolation</li> <li>● Support port loop detection</li> <li>● Support the ULDP</li> <li>● Support LLDP</li> <li>● Support the Port Channel configuration</li> <li>● Support LED shut - off</li> <li>● Support Jumbo packet</li> </ul>
VLAN&MAC Address	<ul style="list-style-type: none"> <li>● Support for MAC/strategy/port/protocol/IP subnet VLAN</li> <li>● Support Dot1q tunnel</li> <li>● Support GVRP</li> <li>● VLAN - translation</li> <li>● Support support MAC address automatic learning and aging</li> <li>● Support the source MAC address filtering</li> </ul>
STP	<ul style="list-style-type: none"> <li>● Support STP</li> </ul>
QoS	<ul style="list-style-type: none"> <li>● Support WRR, WDRR queue scheduling algorithm</li> <li>● Support flexible QinQ operation</li> </ul>
Three layer forward and routing protocols	<ul style="list-style-type: none"> <li>● Support three layer forward</li> <li>● Support the ARP configuration</li> <li>● Support the static routing, OSPF, RIP configuration</li> <li>● Support IPv4 and IPv6 routing</li> </ul>
DHCP	<ul style="list-style-type: none"> <li>● Support the DHCP relay</li> <li>● Support the DHCP Server</li> <li>● Support DHCP Snooping</li> </ul>
Multicast protocol	<ul style="list-style-type: none"> <li>● Support DCSCM configuration</li> <li>● Support IGMP Snooping</li> <li>● Support IPv6 multicast, MLD configuration</li> </ul>
Safety features	<ul style="list-style-type: none"> <li>● Support 802.1x, the Radius authentication</li> <li>● Support for AM</li> <li>● Supports IPv6 security RA configuration</li> <li>● Support the MAB configuration</li> <li>● Support SSL</li> <li>● Support for protection against Dos attacks</li> <li>● Support ACL</li> </ul>
reliability	<ul style="list-style-type: none"> <li>● Support MRRP</li> <li>● Support ULPP</li> </ul>
The network time	<ul style="list-style-type: none"> <li>● Support SNTP</li> <li>● Support the NTP</li> </ul>
Traffic monitoring	<ul style="list-style-type: none"> <li>● Support port mirror</li> <li>● Support the flow</li> </ul>