

24-Port 10/100Mbps + 2-Port Gigabit Combo Base-T/SFP Ethernet Unmanaged Switch

FR-S1226MC



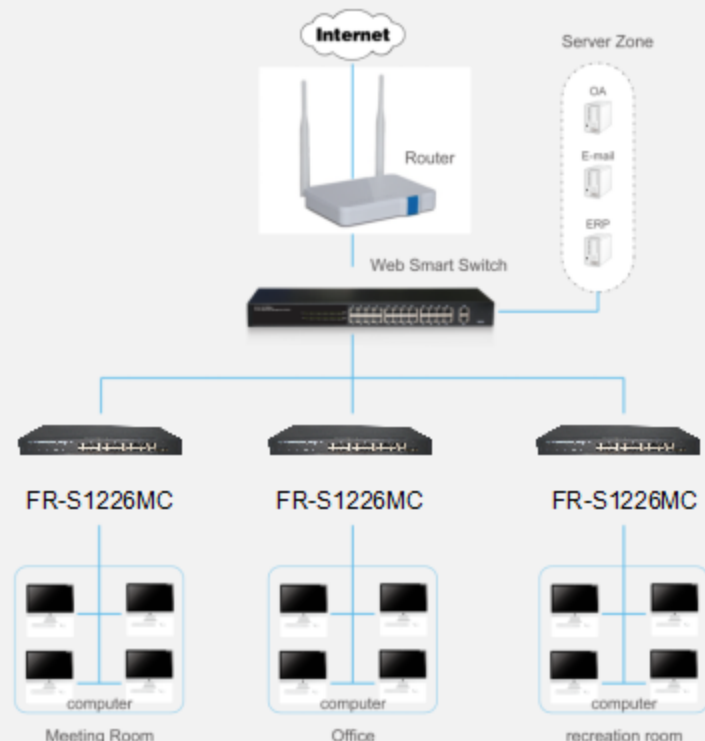
Characteristics

- 24 x 10/100Mbps Auto Negotiation Ethernet port, 2 x 1000Mbps Combo ports
- Support port auto MDI/MDIX
- Switching Capacity up to 8.8G
- Store and forward mode operates
- Support MAC address auto-learning
- Internal Power supply

Description

FR-S1226MC is a high performance switch. Provides Twenty-four 10/100Mbps Auto-Negotiation RJ45 ports, plus two gigabit Combo ports, it can be used to link bandwidth higher upstream equipment. This switch is a design of high integration level, easy to operate, which is suitable for the small and medium office and home network. The switch provide you with a simple, economic, standard and high performance of network application plan, it is ideal choice to promote the department and working group performance. It provide simple and understood LED indicator light on the front panel, so that you can quickly judge the working state of the switch, and help to diagnose the network failure. intelligent village, hotel, office network and campus network.

Application of topology



24-Port 10/100Mbps + 2-Port Gigabit Combo Base-T/SFP
Ethernet Unmanaged Switch

FR-S1226MC

Features

- Comply with IEEE802.3, IEEE802.3u, IEEE802.3ab, IEEE802.3x, IEEE802.3az standards
- 24 x 10/100Mbps Auto Negotiation Ethernet port, 2 x 1000Mbps Combo ports. All port auto MDI/MDIX
- Supports IEEE802.3x flow control for Full-duplex and backpressure for Half-duplex
- Supports MAC address auto-learning and auto-aging
- Store and forward mode operates
- LED indicators for monitoring PSE, Link/Activity
- The internal power supply, exquisite design, Suitable for rack installation.

Hardware Specification

| | |
|------------------------|---|
| Model | FR-S1226MC |
| Chipset | IP1829A+2*AR8033 |
| Standards | IEEE802.3i , IEEE802.3u , IEEE802.3ab , IEEE802.3x , IEEE802.3az |
| Network Media (Cable) | 10BASE-T: UTP category 3,4,5 cable (maximum 100m) 100BASE-Tx: UTP category 5,5e cable (maximum 100m) 1000BASE-T: UTP category 5e,6 cable (maximum 100m) 1000Base-SX: 62.5µm/50µm MMF(2m~550m) 1000Base-LX: 62.5µm/50µm MMF(2m~550m) or 10µm SMF(2m~5000m) |
| Transfer Method | Store-and-Forward |
| Switching Capacity | 8.8Gbps |
| Packet Forwarding Rate | 6.55Mbps |
| Packet Buffer | 4Mbit |
| MAC Address Table | 16K |
| Jumbo Frame | 16KByte |

● 24-Port 10/100Mbps + 2-Port Gigabit Combo Base-T/SFP
Ethernet Unmanaged Switch

FR-S1226MC

| | | |
|---------------------------------|-------------------|---|
| Number of Ports | | 24 x 10/100Mbps Auto-Negotiation ports 2 x Gigabit Combo (RJ45 / SFP) port |
| LED indicators | Per Port | Link/Act: Green |
| | Per Device | Power: Green |
| Power Supply | | 100-240VAC, 50/60Hz internal power |
| Power Consumption | | Maximum:5.73W (AC220V/50Hz) |
| Dimensions (W x D x H) | | 440*208*44mm |
| Environment | | Operating Temperature: 0°C - 45°C Storage Temperature: -40°C - 70°C Operating Humidity: 10%~90% RH non-condensing Storage humidity: 5%~90% RH non-condensing |

FULLRIVER
Link our dreams