

24-Port 10/100Mbps Multi-mode Ethernet Switch

FR-S1124M

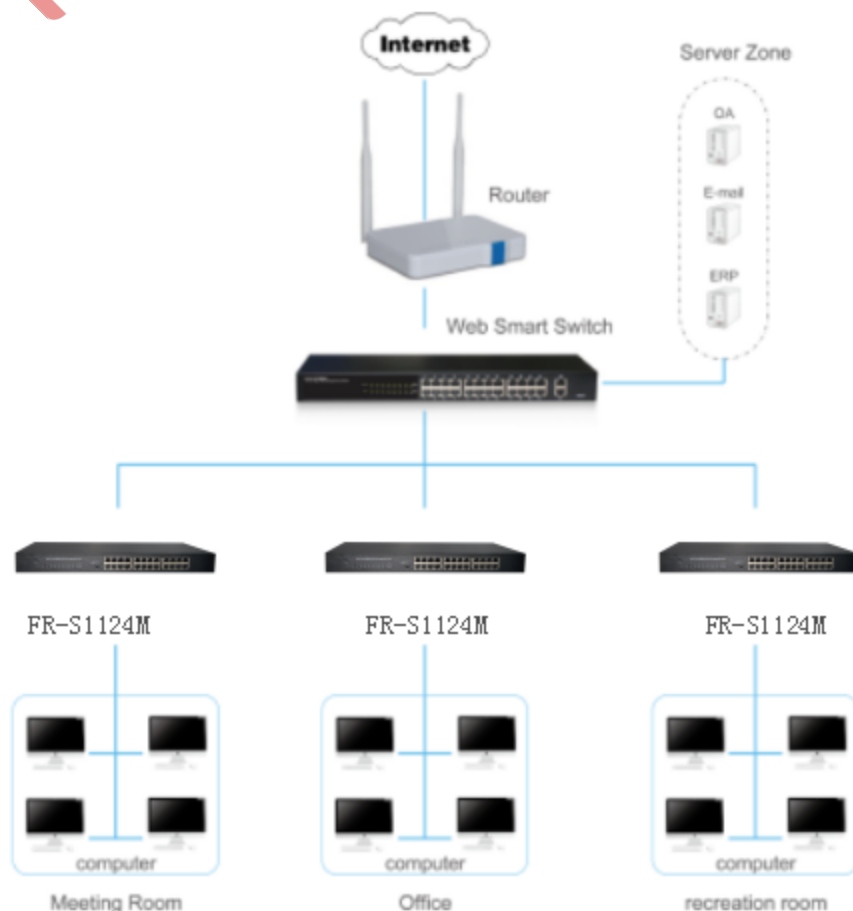
Characteristics

- Intelligent identification
- High performance, durable stability
- Adopt the store - forwarding mode
- Switching Capacity 4.8Gb
- Multi-mode toggle switch

Description

The FR-S1124M 24-Port 10/100Mbps Multi-mode Ethernet Switch is designed for SOHO (Small Office/Home Office) or work-group users. All 24 ports support auto MDI/MDIX, no need to worry about the cable type, simply plug and play. With the low-cost, easy-to-use, high performance, seamless design makes it an Eco-friendly solution for your network. Provides 3 modes to choose from, Normal mode, Flow Control mode, VLAN mode.

Application topology



24-Port 10/100Mbps Multi-mode Ethernet Switch FR-S1124M

Features

- Complies with IEEE 802.3, IEEE 802.3u, IEEE802.3x, IEEE802.3az standards;
- Supports IEEE 802.3x flow control for Full Duplex mode and back-pressure for Half Duplex mode;
- Store and forward mode operates;
- 24 10/100Mbps Auto-Negotiation RJ45 ports supporting Auto-MDI/MDIX;
- Supports MAC address auto-learning and auto-aging;
- LED indicators for monitoring power, link/activity;
- Built-in wide voltage power supply,exquisite housing design;
- Provides 3 modes to choose from, Normal mode, Flow Control mode, VLAN mode ◦

Specification

| | | |
|-------------------------|---------------------------------------------------------------------------------------------------------------------------------------------------------|--------------------|
| Model Name | FR-S1124M | |
| Chipset | RTL8324E+RTL8208D | |
| Standards and Protocols | IEEE 802.3i, IEEE 802.3u, IEEE802.3x, IEEE802.3az | |
| Interface | 24*10 / 100Mbps adaptive RJ45 ports (Auto MDI / MDIX) | |
| Network Media | 10BASE-T: UTP category 3,4 cable (maximum 100m) 100BASE-TX: UTP category 5,5e cable (maximum 100m) | |
| Working Mode | Normal mode (Switch all ports can communicate with each other) | |
| | Flow Control mode(All ports' flow control functions are disable) | |
| | VLAN mode(1 to 22 can not communicate with each other, but can communicate with the uplink 23,24 ports) | |
| Transfer Method | Store-and-Foward | |
| MAC Address Table | 8K | |
| Switching Capacity | 4.8Gbps | |
| Packet Forwarding Rate | 3.57Gpps | |
| Packet Buffer | 2Mbits | |
| Jumbo Frame | 2KBytes | |
| Indicators | Per Device | Power: Green |
| | Per Port | Link / Act : Green |
| Power Consumption | Maximum:5W (220V/50Hz) | |
| Dimensions (L×W×H) | 440*208*44mm | |
| Environment | Operating Temperature: 0℃~50℃ Storage Temperature: -40℃~70℃ Operating Humidity: 10%~90% non-condensing Storage humidity: 5%~90% non-condensing | |

Hardware Block Diagram

