

24-Port Fast Ethernet Multi-mode Unmanaged Switch

FR-S1024D-F



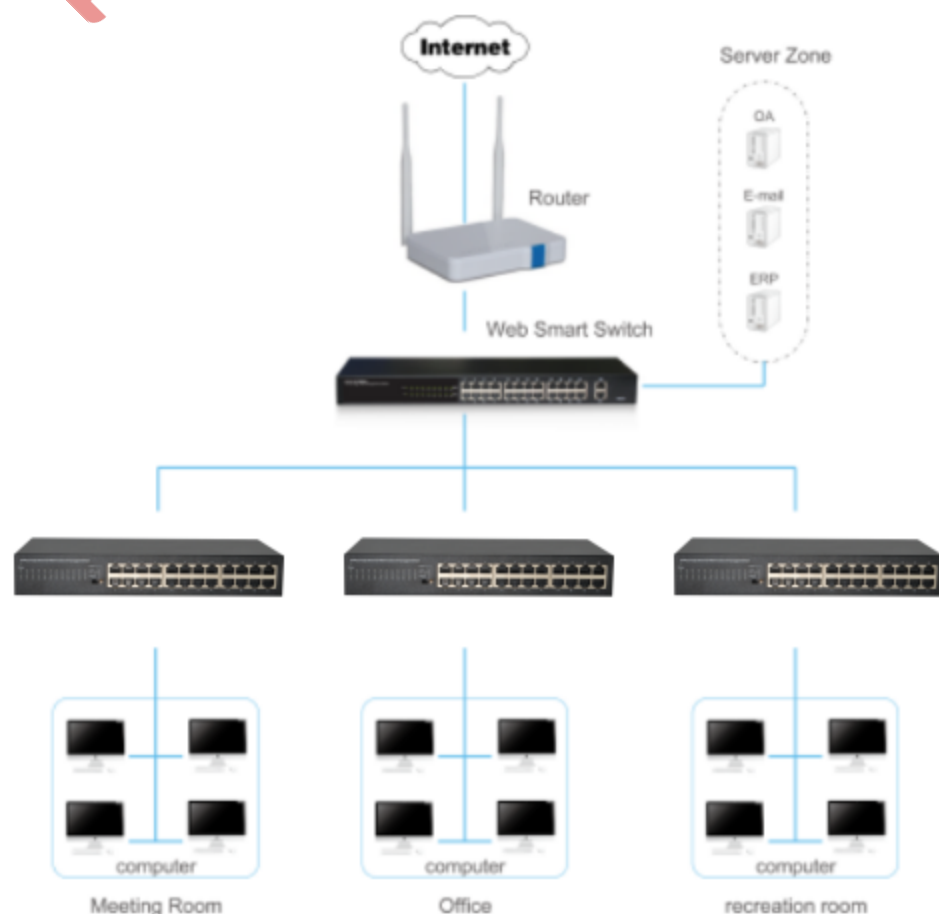
Characteristics

- Intelligent identification
- High performance, durable stability
- Adopt the store - forwarding mode
- Switching Capacity 4.8Gb
- Multi-mode toggle switch

Description

The FR-S1024D-F Fast Ethernet Unmanaged Switch is designed for SOHO (Small Office/Home Office) or work-group users. All 24 ports support auto MDI/MDIX, no need to worry about the cable type, simply plug and play. With the low-cost, easy-to-use, high performance, seamless design makes it an Eco-friendly solution for your network. Provides 4 modes to choose from, Normal mode, Flow Control mode, VLAN mode, Extend mode.

Application topology



24-Port Fast Ethernet Multi-mode Unmanaged Switch

FR-S1024D-F

Features

- Complies with IEEE 802.3, IEEE 802.3u, IEEE802.3x, IEEE802.3az standards;
- Supports IEEE 802.3x flow control for Full Duplex mode and back-pressure for Half Duplex mode;
- Store and forward mode operates;
- 24 10/100Mbps Auto-Negotiation RJ45 ports supporting Auto-MDI/MDIX;
- Supports MAC address auto-learning and auto-aging;
- LED indicators for monitoring power, link/activity;
- Built-in wide voltage power supply,exquisite housing design;
- Provides 4 modes to choose from, Normal mode, Flow Control mode, VLAN mode, Extend mode.

Specification

Model Name		FR-S1024D-F
Chipset		RTL8324E+RTL8208D
Standards and Protocols		IEEE 802.3i, IEEE 802.3u, IEEE802.3x, IEEE802.3az
Interface		24*10 / 100Mbps adaptive RJ45 ports (Auto MDI / MDIX)
Network Media		10BASE-T: UTP category 3,4 cable (maximum 100m) 100BASE-TX: UTP category 5,5e cable (maximum 100m)
Working Mode		Normal mode (Switch all ports can communicate with each other)
		Flow Control mode(All ports' flow control functions are disable)
		VLAN mode(1 to 22 can not communicate with each other, but can communicate with the uplink port (23,24ports)
		Extend mode(1 to 8 port rate down to 10Mbps, the farthest transmission distance of up to 250 meters, all ports can communicate with each other)
Transfer Method		Store-and-Foward
MAC Address Table		8K
Switching Capacity		4.8Gbps
Packet Forwarding Rate		3.57Gpps
Packet Buffer		2Mbits
Jumbo Frame		2KBytes
Indicators	Per Device	Power: Green
	Per Port	Link / Act : Green
Power Consumption		3.5W (220V/50Hz)
Dimensions (L×W×H)		280*126*44mm
Environment		Operating Temperature: 0℃~45℃ Storage Temperature: -40℃~70℃ Operating Humidity: 10%~90% non-condensing Storage humidity: 5%~90% non-condensing