

## 8-Port 10/100Mbps+1-Port Gigabit +1-Port Gigabit SFP Ethernet Unmanagement Switch FR-S1010DF-E



### Characteristic

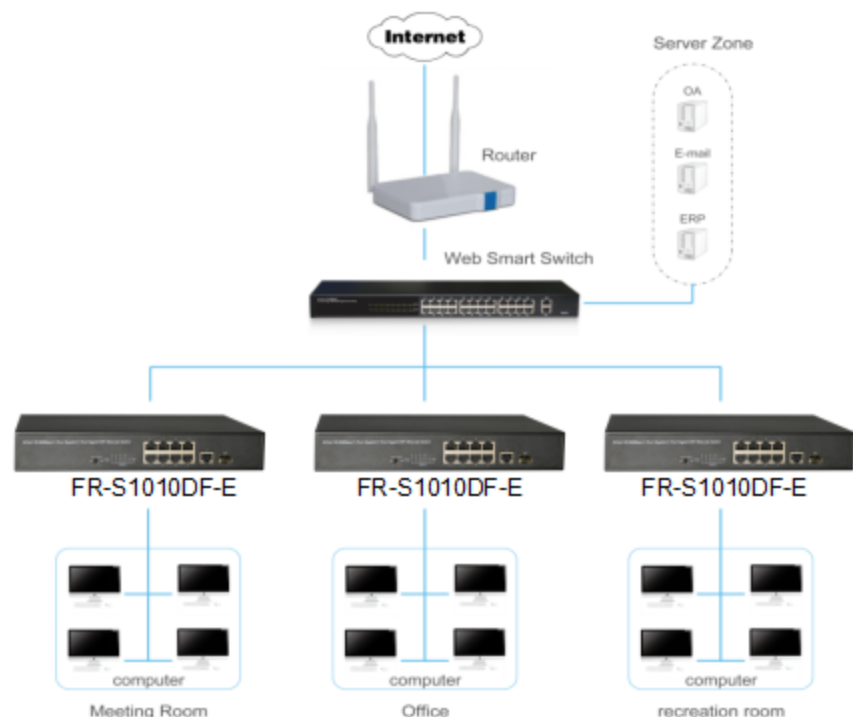
- Intelligent identification
- 1\*1000Mbps RJ45 ports
- 1\*1000Mbps SFP ports
- Internal Power supply
- High performance, durable stability
- Adopt the store - forwarding mode
- Switching Capacity 5.6Gb
- Support 802.3az Energy Efficient Ethernet
- Flow control switch

### Description

FR-S1010DF-E is a 8-Ports 10/100Mbps + 1-Port Gigabit +1 Port SFP unmanaged Ethernet switch, provides eight 10/100Mbps self-adaption RJ45 port, plus two gigabit port ---one 10/100/1000Mbps RJ45 port and one 100/1000Mbps SFP port, it can be used to link bandwidth higher upstream equipment. Using store-and-forward technology, combined with dynamic memory allocation, ensure the bandwidth effective allocation to each port. Special design a flow control switch, flow control switch is "ON", it can avoid packet loss effectively when nodes in the sending and receiving data. Built-in high reliability, design for wide voltage input application power supply, even if the voltage is not stable of power grid, also can guarantee the equipment can work normally.

FR-S1010DF-E overall excellent performance, simple to use, plug and play, particularly suitable for security application, and other application of the work condition is relatively poor.

### The application of topology



● **FR-S1010DF-E**

**Features**

- Comply with IEEE 802.3i,IEEE 802.3u,IEEE802.3ab,IEEE802.3x,IEEE802.3az,IEEE802.3z standards.
- Supports IEEE802.3x flow control for Full-duplex Mode and backpressure for Half-duplex Mode.
- Data exchange using storage-forward mode.
- Flow control function can be controlled via a button.
- Eight10/100Mbps self-adaption RJ45 port, plus two alternative gigabit port --one 10/100/1000Mbps RJ45 port and one 100/1000Mbps SFP port, it can be used to link bandwidth higher upstream equipment.
- Support MAC address learning.
- LED indicators for monitoring power, link/activity.
- Design a flow control switch; it can be manually control the flow control function for all ports.
- Built-in high reliability, design for wide voltage input application power supply.
- 11 inches full metal iron shell design, suitable for rack installation.

**Specification**

<b>Model</b>	FR-S1010DF-E	
<b>Chipset</b>	RTL8310SR+RTL8201F	
<b>Standards</b>	IEEE802.3i,IEEE802.3u,IEEE802.3ab,IEEE802.3x,IEEE802.3az,IEEE802.3z	
<b>Number of Ports</b>	8 *10/100Mbps Auto-Negotiation ports 1*10/100/1000Mbps Auto-Negotiation ports 1*1000Mbps SFP ports	
<b>Network Media (Cable)</b>	10Base-T: UTP category 3, 4, 5 cable (maximum 100m) 100Base-Tx: UTP category 5, 5e cable (maximum 100m) 1000Base-T: UTP category 5e, 6 cable (maximum 100m) 1000Base-X:MMF,SMF	
<b>Transfer Method</b>	Store-forwarding	
<b>MAC Address Table</b>	4K	
<b>Switching Capacity</b>	5.6Gbps	
<b>Packet Forwarding Rate</b>	4.1664Mpps	
<b>Packet Buffer</b>	1.5Mbit	
<b>Jumbo Frame</b>	9216Bytes	
<b>Indicators</b>	<b>Per Device</b>	Power: Green
	<b>Per Port</b>	Link/Activity : Green
<b>Power</b>	Input: 100V~240VAC 50/60Hz Power consumption: 2.8W @230V/50Hz	
<b>Dimensions ( W x D x H )</b>	280mm*180mm*44mm	
<b>Environment</b>	Operating Temperature: 0°C - 40°C Storage Temperature: -10°C - 70°C Operating Humidity: 10%~90% non-condensing Storage humidity: 5%~90% non-condensing	