

8-Port 10/100Mbps + 2-Port Gigabit + 2-Port Gigabit SFP L2 Managed Switch

FR-S3012MF-C



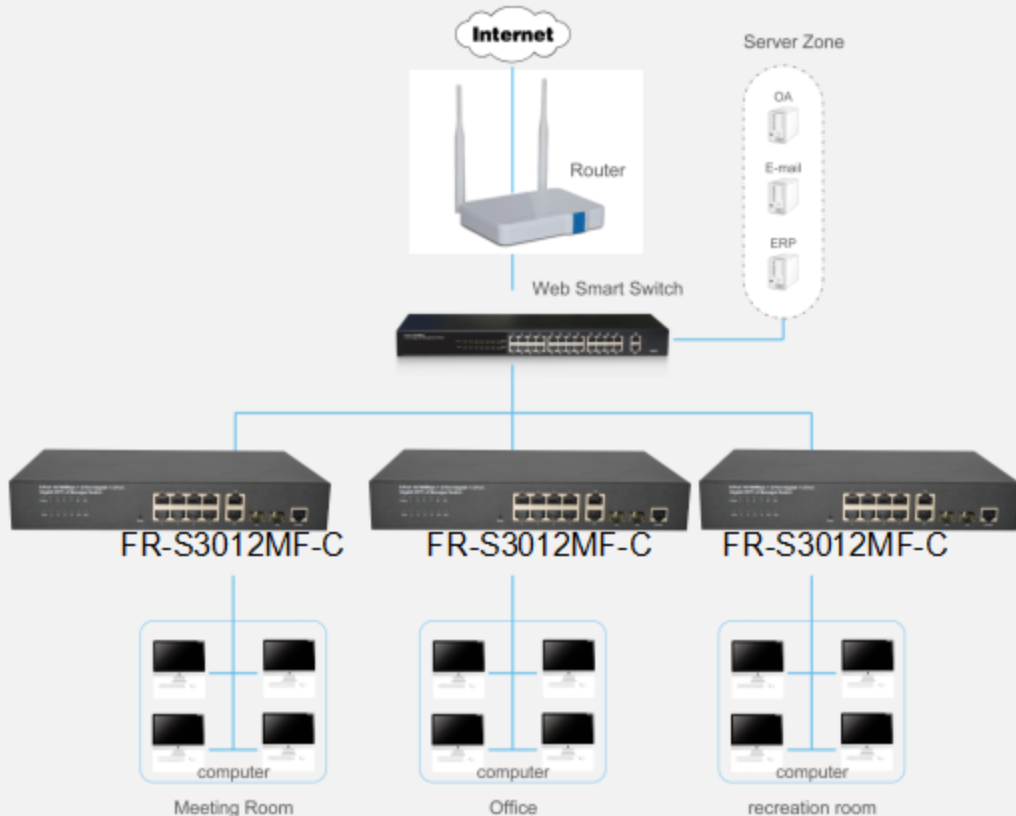
characteristics

- 8 x 10/100Mbps Auto MDI/MDI-X Ethernet port , 2x10/100/1000Mbps Auto MDI/MDI-X Ethernet port, Two SFP ports
- Switching Capacity up to 9.6G
- Store and forward mode operates
- Support Web-based Management

Description

FR-S3012MF-C is a high performance the L2 managed gigabit switch. Provides eight 10/100Mbps self-adaptation RJ45 ports, two 10/100/1000Mbps RJ45 ports, plus two gigabit SFP ports, it can be used to link bandwidth higher upstream equipment. Support VLAN ACL based on port, easily implement network monitoring, traffic regulation, priority tag and traffic control. Support traditional STP/RSTP/MSTP 2 link protection technology; greatly improve the ability of fault tolerance, redundancy backup to ensure the stable operation of the network. Support ACL control based on the time, easy control the access time accurately. Support 802.1x authentication based on the port and MAC, easily set user access. Perfect QOS strategy and plenty of VLAN function, easy to maintenance and management, meet the networking and access requirements of enterprises, intelligent village, hotel, office network and campus network. Built-in high reliability, de-sign for wide voltage input application power supply, even if the voltage is not stable of power grid, also can guarantee the equipment can work normally.

Application of topology



● 8-Port 10/100Mbps + 2-Port Gigabit + 2-Port Gigabit SFP L2 Managed Switch FR-S3012MF-C

| Features

- Comply with IEEE802.3i, IEEE802.3u, IEEE802.3ab, IEEE802.3x, IEEE802.3z, IEEE802.3ad standards
- Supports IEEE802.3x flow control for Full-duplex Mode and backpressure for Half-duplex Mode
- Supports MAC address auto-learning and auto-aging
- Store and forward mode operates
- Support SNMP/RMON/TELENT
- Supports IEEE802.1Q VLAN,4K VLAN Table
- Support IEEE802.1p Priority Queues
- Support 2K+256-entry ingress and egress ACL
- Support Storm Control
- Support QoS、Port Mirroring、Link Aggregation Protocol
- LED indicators for monitoring power, link/activity ,Speed
- Web-based Management Support
- Internal power adapter supply

| Hardware Specification

Model	FR-S3012MF-C
Chipset	RTL8332M++RTL8214FC+2*RTL8231
Standards	IEEE 802.3i, IEEE 802.3u, IEEE 802.3ab, IEEE802.3x, IEEE802.3z, IEEE802.3ad, IEEE802.1P, IEEE802.1Q
Network Media (Cable)	10BASE-T: UTP category 3,4,5 cable (maximum 100m) 100BASE-Tx: UTP category 5,5e cable (maximum 100m) 1000BASE-T: UTP category 5e,6 cable (maximum 100m) 1000Base-SX:62.5µm/50µm MMF(2m~550m) 1000Base-LX:62.5µm/50µm MMF(2m~550m) or 10µm SMF (2m~5000m)
Transfer Method	Store-and-Forward
Switching Capacity	9.6Gbps

● 8-Port 10/100Mbps + 2-Port Gigabit + 2-Port Gigabit SFP L2 Managed Switch
FR-S3012MF-C

Packet Forwarding Rate		7.14Mpps
Packet Buffer		4.1Mbit
MAC Address Table		8K
Number of Ports		8 x 10/100Mbps Auto-Negotiation ports 2 x 10/100/1000Mbps Auto-Negotiation ports 2 x Gigabit SFP ports 1 x RJ45 Console Port
LED indicators	1-8 port	10/100Mbps Link/Act:Green
	9-12 port and SFP	10/100Mbps Link/Act:Orange 1000Mbps Link/Act: Green
	Other	Power: Green SYS:Green
Power Supply		AC 100-240V/50-60Hz internal power
Power Consumption		Maximum:6.9W(220V/50Hz)
Dimensions (W x D x H)		280*180*44mm
Environment		Operating Temperature: 0°C - 45°C Storage Temperature: -40°C - 70°C Operating Humidity: 10%~90% RH non-condensing Storage humidity: 5%~90% RH non-condensing

● 8-Port 10/100Mbps + 2-Port Gigabit + 2-Port Gigabit SFP L2 Managed Switch
FR-S3012MF-

Software Specification

System	IP Configuration(IPV4、IPV6)
	User Configuration
	Time Settings(SNTP)
	Log Management
	SNMP Management(V1,V2C,V3)
	RMON(1,2,3,9)
Port	Port Configuration
	Link Aggregation(static、Lacp)
	Port Mirroring
	Jumbo Frame
Vlan	Port based VLAN,Private VLAN
	MAC based VLAN
	Voice VLAN
	Gvrp
IGMP	IGMP Snooping (V2、V3)
	Multicast Group (256)
STP	IEEE 802.1D STP
	IEEE 802.1W RSTP
	IEEE 802.1S MSTP
Security	Broadcast / Uncast / Multicast Storm Control
	IEEE 802.1x、Radius、TACACS+
	DHCP Snooping/DHCP Relay
	DHCP Server
	ERPS
	IP Source Guard
	ARP Check
	DAI
ACL	MAC-Based ACL
	MAC-Based ACE
	IPv4-Based ACL
	IPv4-Based ACE
QoS	WRR (Weighted Round Robin)
	Port based QoS
	IEEE 802.1p Class of Service
	DSCP-based QoS
	QoS basic mode
	QoS advanced mode (Policy based)
Bandwidth Control	Ingress Port
	Ingress VLAN
	Egress Port
	Egress Queue
MAC Address Setting	Static Mac Setting
	MAC Filtering
	Dynamic Address Learn/Setting

● 8-Port 10/100Mbps + 2-Port Gigabit + 2-Port Gigabit SFP L2 Managed Switch
FR-S3012MF-C

LLDP	LLDP Port Configuration
	MED Network Porxy
Management	System information
	Ping Test /Traceroute
	Factory default
	Backup/upgrade Management
	Configuration Management

FULLRIVER
Link our dreams