

## 8-Port 10/100Mbps + 1-Port Gigabit Combo Base-T/SFP Web Smart Switch

FR-S2010FW-D



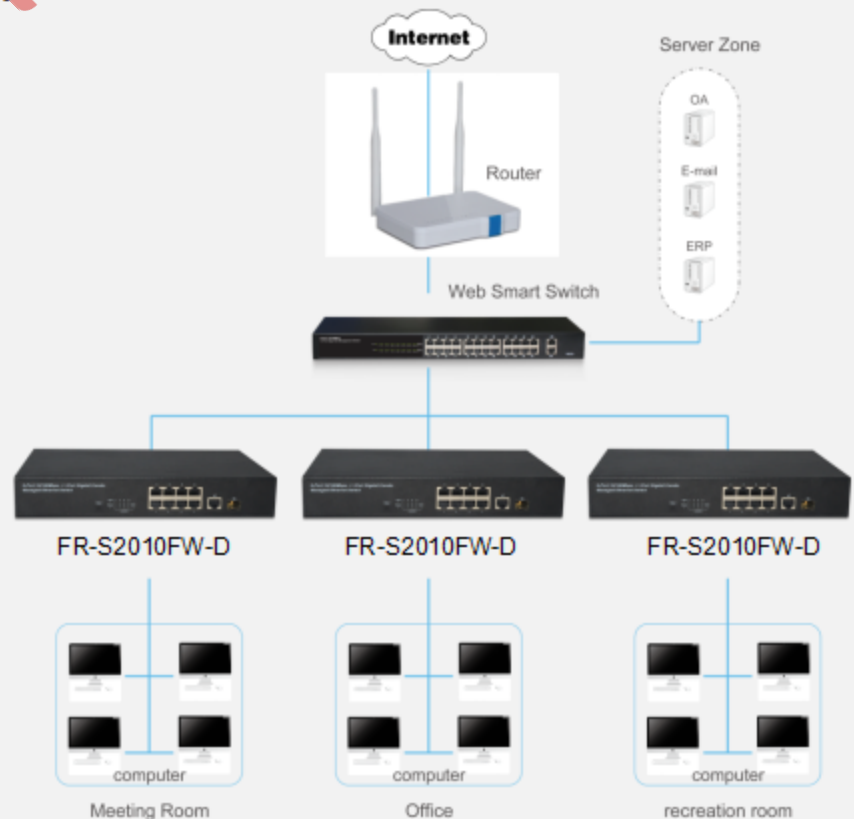
### Characteristics

- Wire-speed forwarding, intelligent recognition
- Gigabit uplink port
- External -48V input
- Full metal iron shell design, suitable for rack installation
- wide voltage input application power supply

### Description

FR-S2010FW-D is a 8-Ports 10/100Mbps + 1-Port Gigabit Combo Base-T/SFP Web Smart switch, provides eight 10/100Mbps RJ45 port, plus one 10/100/1000Mbps RJ45 port & one Gigabit SFP optical port (with 10/100/1000Mbps RJ45 port share), it can be used to link bandwidth higher upstream equipment. Using store-and-forward technology combined with dynamic memory allocation, ensure the bandwidth effective allocation to each port. Supports port based VLAN and Tag based VLAN, port aggregation, bandwidth control, port mirroring, priority, static MAC address table, port security and other intelligent configuration. Built-in high reliability, design for wide voltage input application power supply, even if the voltage is not stable of power grid, also can guarantee the equipment can work normally.

### Application



## Features

- Comply with IEEE802.3i , IEEE 802.3u, IEEE802.3z, IEEE802.3ab, IEEE802.3x standards
- Eight 10/100Mbps RJ45 port, plus one 10/100/1000Mbps RJ45 port & one Gigabit SFP optical port
- Support 4K MAC Address Table & MAC address learning
- Support IGMP Snooping protocol
- Support for broadcast storm suppression
- LED indicators for monitoring power, link/activity and system
- Internal power supply
- Support external -48V input
- The design of metal shell, suitable for rack installation

## Hardware specifications

|                          |   |                |
|--------------------------|---|----------------|
| Model                    | FR-S2010FW-D  |                |
| Chipset                  | IP1818+IP108A+IP1001+HP210W   |                |
| Standards                | IEEE 802.3i, IEEE 802.3u, IEEE802.3z, IEEE802.3ab, IEEE802.3x   |                |
| Interface                | 8 *10/100Mbps RJ45 ports (Auto Negotiatin/Auto MDI/MDIX)<br>1 * 10/100/1000Mbps BASE-T port (Auto Negotiatin/Auto MDI/MDIX) or 100/1000Mbps SFP Combo Ports     |                |
| Network Media            | 10BASE-T: UTP category 3,4,5 cable (maximum 100m)<br>100BASE-TX/1000BASE-T: UTP category 5, 5e or above cable (maximum 100m)<br>SFP 1000BASE-X: MMF, SMF        |                |
| Transfer Method          | Store and Forward   |                |
| Mac Address Table        | 4K  |                |
| Switching Capacity       | 3.6Gbps   |                |
| Packet Forwarding Rate   | 2.68Mpps  |                |
| Packet Buffer            | 2.75Mbit  |                |
| Jumbo Frame              | 1536Byte  |                |
| Indicators               | Per Device  | Power , System |
|                          | Per Port  | Link/Activity  |
| Power Supply             | AC: 100-240V 50/60Hz<br>DC: -48V  |                |
| Power Consumption        | Maximum: 6.9W (220V/50Hz)   |                |
| Dimensions ( W x D x H ) | 280*180*44mm  |                |
| Environment              | Operating Temperature: 0°C - 40°C<br>Storage Temperature: -40°C - 70°C<br>Operating Humidity: 10%~90% non-condensing<br>Storage humidity: 5%~90% non-condensing |                |

## I software Specifications

|                 |                         |
|-----------------|-------------------------|
| Port Management | Port Configuration      |
|                 | Port Mirroring          |
|                 | Bandwidth Control       |
|                 | Bandwidth Storm Control |
|                 | Port Counter            |
| VLAN            | Port VLAN               |
|                 | Tag VLAN                |
|                 | Multi to 1 Setting      |
|                 | Non-Association Port    |
| Security        | QoS                     |
|                 | MAC Address Banding     |
|                 | TCP/UDP Filtering       |
|                 | STP/RSTP Spanning Tree  |
|                 | Loopback Detection      |
|                 | DHCP Relay Agent        |
|                 | IGMP Snooping v1/v2     |
|                 | SNMP                    |
|                 | Trunking                |
| Management      | Web-based Gui           |
|                 | Telnet                  |