

24-Port Gigabit + 4-Port Gigabit SFP Ethernet Unmanaged PoE Switch

FR-S1028PEGF-C



characteristics

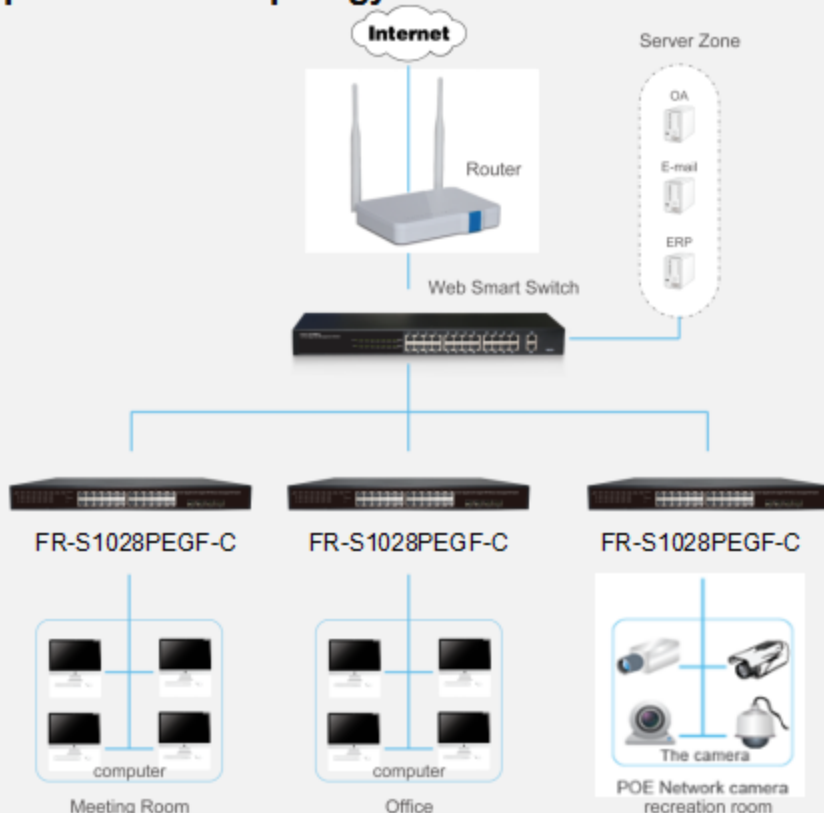
- 24-Gigabit PoE ports +4-Gigabit SFP ports
- Internal high performance 400W power supply , durable stability
- Adopt the store - forwarding mode
- Switching Capacity 56Gbps
- Complied with IEEE802.3at backward compatibility IEEE802.3af
- Supports PoE power up to 30W for each PoE port, total power 370W for all PoE ports

Description

FR-S1028PEGF-C is 24 ports 10/100/1000Mbps + 4 ports 1000Mbps SFP Slots Unmanaged Ethernet PoE Switch. This switch is a design of high integration level, easy to operate, which is suitable for the small and medium office and home network. The switch provide you with a simple, economic, standard and high performance of network application plan, it is ideal choice to promote the department and working group performance . It provide simple and understood LED indicator light on the front panel, so that you can quickly judge the working state of the switch, and help to diagnose the network failure.

These PoE ports can automatically detect and supply power with those IEEE 802.3af/at compliant Powered Devices (PD). In this situation, the electrical power is transmitted along with data in one single cable allowing you to expand your network where there are no power lines or outlets, where you wish to fix devices such as AP, IP Cameras or IP Phones, etc.

Application of topology



24-Port Gigabit + 4-Port Gigabit SFP Ethernet Unmanaged PoE Switch

FR-S1028PEGF-C

Features

- Comply with IEEE 802.3i, IEEE802.3z , IEEE 802.3u, IEEE802.3x, IEEE802.3ab standards
- Supports IEEE802.3at/af PoE standards
- Supports PoE power up to 30W for each PoE port, total power up to 370W for all PoE ports
- Supports MAC address auto-learning and auto-aging
- Store and forward mode operates
- 24 x 10/100/1000Mbps Auto MDI/MDI-X Ethernet port, 4 x 1000Mbps SFP Slots
- Supports IEEE802.3x flow control for Full-duplex mode and backpressure for Half-duplex mode
- LED indicators for monitoring PSE, Link/Activity/Speed

Hardware Specification

Model	FR-S1028PEGF-C	
Chipset	RTL8382L+2*RTL8218B-VC+RTL8214FC+2*RTL8231+3*IP808	
Standards and Protocols	IEEE 802.3i、IEEE 802.3u、IEEE 802.3ab、IEEE 802.3x、IEEE 802.3z、IEEE 802.3at、IEEE 802.3af	
Interface	24 x 10/100/1000Mbps RJ45 Ports (Auto Negotiation/Auto MDI/MDIX) 4 x 1000Mbps SFP ports	
Network Media	10BASE-T: UTP category 3, 4-5 cable (maximum 100m) 100BASE-Tx: UTP category 5, 5e cable (maximum 100m) 1000Base-T: UTP category 5e, 6 cable (maximum 100m) 1000Base-SX: 62.5µm/50µm MMF(2m~550m) 1000Base-LX: 62.5µm/50µm MMF(2m~550m)Or 10µm SMF (2m~5000m)	
Transfer Method	Store-and-Forward	
MAC Address Table	8K	
Switching Capacity	56Gbps	
Packet Forwarding Rate	41.66Mbps	
Packet Buffer	4.1Mbit	
Jumbo Frame	9KBytes	
PoE Ports(RJ45)	24* PoE ports compliant with 802.3at/af	
Power Pin Assignment	1/2(+), 3/6(-)	
PoE Budget	370W	
LED indicators	Per Device	Power: Green
	Per Port	10/100Mbps Link/Act: Orange 1000Mbps Link/Act: Green PoE: Yellow
Power Supply	100~240V AC, 50/60HZ,400W internal power	
Power Consumption	Maximum(PoE on): 428.7W (220V/50Hz)	
Dimensions (W x D x H)	440*330*44mm	
Environment	Operating Temperature: 0°C~45°C Storage Temperature: -40°C~70°C Operating Humidity: 10%~90% RH non-condensing Storage Humidity: 5%~90% RH non-condensing	