

24-Port 10/100Mbps + 2-Port Gigabit Combo Base-T/SFP L2 Managed PoE Switch

FR-S3028PEMF-E



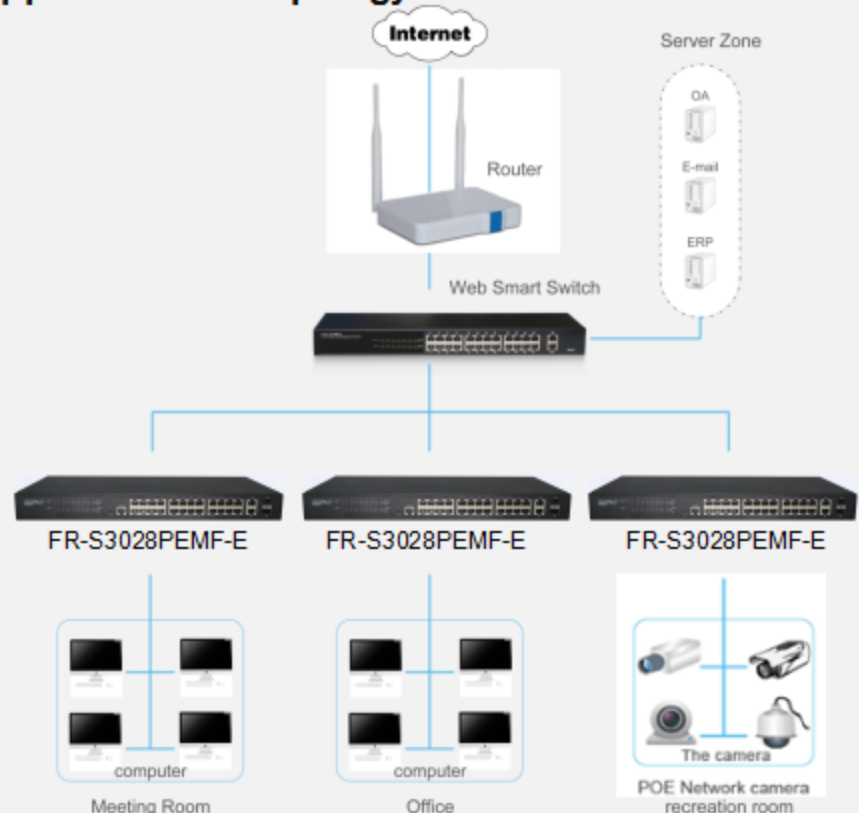
Characteristics

- 24 x 10/100Mbps Auto Negotiation Ethernet port, Two Combo ports
- Support port auto MDI/MDIX
- Switching Capacity up to 8.8G
- Store and forward mode operates
- Support MAC address auto-learning
- Support Web-based Management
- Supports PoE power up to 30W for each PoE port, total power up to 240W for all PoE ports

Description

FR-S3028PEMF-E is a high performance L2 managed PoE switch. Provides twenty-four 10/100Mbps Auto-Negotiation RJ45 ports, plus two gigabit Combo ports, it can be used to link bandwidth higher upstream equipment. Support port based VLAN and 802.1Q VLAN, easily implement network monitoring, traffic regulation and traffic control. Support STP/RSTP/MSTP, to improve the ability of fault tolerance, redundancy backup to ensure the stable operation of the network. Perfect QOS strategy and plenty of VLAN function, Easy management and maintenance. PoE ports can automatically detect and supply power with those IEEE 802.3at/af compliant Powered Devices (PD). In this situation, the electrical power is transmitted along with data in one single cable allowing you to expand your network where there are no power lines or outlets, where you wish to fix devices such as AP, IP Cameras or IP Phones, etc.

Application of topology



Features

- Comply with IEEE802.3, IEEE802.3u, IEEE802.3ab, IEEE802.3x, IEEE802.3az, IEEE802.3ad standards
- Supports IEEE802.3at/af PoE standards
- Supports PoE power up to 30W for each PoE port, total power up to 240W for all PoE ports
- Supports IEEE802.3x flow control for Full-duplex and backpressure for Half-duplex
- Supports MAC address auto-learning and auto-aging
- Store and forward mode operates
- Support web management
- Support Storm Control
- Support QoS、Port Mirroring、Link Aggregation Protocol
- LED indicators for monitoring PSE, Link/Activity
- Built in 260W high performance switching power supply

Hardware Specification

Model	FR-S3028PEMF-E
Chipset	IP1829A+2*AR8033+IP211+3*IP808
Standards	IEEE 802.3 , IEEE 802.3u , IEEE 802.3ab , IEEE802.3x , IEEE802.3az , IEEE802.3ad , IEEE802.1p , IEEE802.1q , IEEE802.3at, IEEE802.3af
Network Media (Cable)	10BASE-T: UTP category 3,4,5 cable (maximum 100m) 100BASE-Tx: UTP category 5,5e cable (maximum 100m) 1000BASE-T: UTP category 5e,6 cable (maximum 100m) 1000Base-SX: 62.5μm/50μm MMF(2m~550m) 1000Base-LX: 62.5μm/50μm MMF(2m~550m) or 10μm SMF (2m~5000m)
Transfer Method	Store-and-Forward
Switching Capacity	8.8Gbps
Packet Forwarding Rate	6.55Mbps
Packet Buffer	4Mbit
MAC Address Table	16K
Jumbo Frame	16KByte

24-Port 10/100Mbps + 2-Port Gigabit Combo
Base-T/SFP L2 Managed PoE Switch

FR-S3028PEMF-E

Number of Ports		24 x 10/100Mbps Auto-Negotiation ports 2 x gigabit Combo (RJ45 / SFP) port
PoE Ports(RJ45)		24* PoE ports compliant with IEEE802.3at/af
Power Pin Assignment		4/5(+),7/8(-)
PoE Budget		240W
LED indicators	Per Port	Link/Act:Green PoE : Yellow
	Per Device	Power: Green SYS:Green
Power Supply		AC 100-240V/50-60Hz 260W internal power
Power Consumption		Maximum:270W(220V/50Hz)
Dimensions (W x D x H)		440*208*44mm
Environment		Operating Temperature: 0°C - 45°C Storage Temperature: -40°C - 70°C Operating Humidity: 10%~90% RH non-condensing Storage humidity: 5%~90% RH non-condensing

Software Specification

Port Management	Port Configuration
	Port Mirroring
	Bandwidth Control
	Bandwidth Storm Control
	Port Counter
VLAN	Port VLAN
	Tag VLAN
	Multi to 1 Setting
	Non-Association Port
Security	QoS
	MAC Address Banding
	TCP/UDP Filtering
	STP/RSTP Spanning Tree
	Loopback Detection
	DHCP Relay Agent
	IGMP Snooping v1/v2
	SNMP
	Trunking
Management	Web-based Gui
	Telnet