

## 16-Port 10/100Mbps + 2-Port Gigabit Combo Base-T/SFP Multi-Mode PoE Switch

FR-S1218MC-240P2



### Characteristics

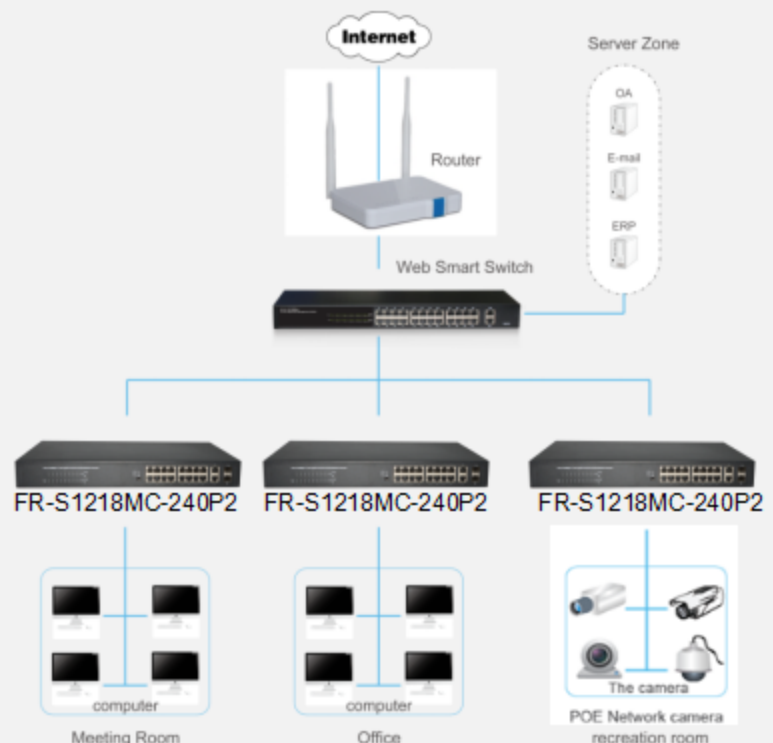
- 16 x 10/100Mbps Auto Negotiation Ethernet port, 2 x 1000Mbps Combo ports
- Support port auto MDI/MDIX
- Switching Capacity up to 7.2G
- Store and forward mode operates
- Support MAC address auto-learning
- Supports PoE power up to 30W for each PoE port, total power up to 240W for all PoE ports
- Free switching of multiple working modes

### Description

FR-S1218MC-240P2 is a high performance multi-mode PoE switch. Provides sixteen 10/100Mbps Auto-Negotiation RJ45 ports, plus two gigabit Combo ports, it can be used to link bandwidth higher upstream equipment. This switch is a design of high integration level, easy to operate, which is suitable for security monitoring and Wi-Fi hotspot layout. The switch provide you with a simple, economic, standard and high performance of network application plan, it is ideal choice to promote the department and working group performance. It provide simple and understood LED indicator light on the front panel, so that you can quickly judge the working state of the switch, and help to diagnose the network failure.

These PoE ports can automatically detect and supply power with those IEEE 802.3at compliant Powered Devices (PD) such as AP, IP Cameras or IP Phones, etc. The switch on the panel to stir, can be configured to automatically switch the normal working mode, port isolation (VLAN) mode, network extend mode, flexible and extensible family, office network without power line layout restrictions; meet the small and medium-sized enterprises, intelligent community, hotels, parks and office network network networking and access requirements.

### Application of topology



16-Port 10/100Mbps + 2-Port Gigabit Combo Base-T/SFP  
Multi-Mode PoE Switch

FR-S1218MC-240P2

## Features

- Comply with IEEE802.3, IEEE802.3u, IEEE802.3ab, IEEE802.3x, IEEE802.3az standards
- 16 x 10/100Mbps Auto Negotiation Ethernet port, 2 x 1000Mbps Combo ports. All port auto MDI/MDIX
- Supports PoE power up to 30W for each PoE port, total power up to 240W for all PoE ports
- Supports IEEE802.3x flow control for Full-duplex and backpressure for Half-duplex
- Supports MAC address auto-learning and auto-aging
- Store and forward mode operates
- Free switching of multiple working modes
- LED indicators for monitoring PSE, Link/Activity
- Built in 260W high performance switching power supply

## Hardware Specification

<b>Model</b>	FR-S1218MC-240P2	
<b>Chipset</b>	IP1829A+2*AR8033+2*IP808	
<b>Standards</b>	IEEE802.3, IEEE802.3u, IEEE802.3ab, IEEE802.3x, IEEE802.3az, IEEE802.3at, IEEE802.3af	
<b>Network Media (Cable)</b>	10BASE-T: UTP category 3,4,5 cable (maximum 100m) 100BASE-Tx: UTP category 5,5e cable (maximum 100m) 1000BASE-T: UTP category 5e,6 cable (maximum 100m) 1000Base-SX: 62.5µm/50µm MMF(2m~550m) 1000Base-LX: 62.5µm/50µm MMF(2m~550m) or 10µm SMF(2m~5000m)	
<b>Transfer Method</b>	Store-and-Forward	
<b>Switching Capacity</b>	7.2Gbps	
<b>Packet Forwarding Rate</b>	5.36Mbps	
<b>Packet Buffer</b>	4Mbit	
<b>MAC Address Table</b>	16K	
<b>Jumbo Frame</b>	16KByte	
<b>Working Mode</b>	<b>Normal mode</b>	Switch all ports can communicate with each other
	<b>Port isolation (VLAN) mode</b>	1 to 16 can not communicate with each other, but can communicate with the uplink Combo port (17T/S, 18T/S)
	<b>Extend mode</b>	1 to 8 port rate down to 10Mbps, the farthest transmission distance of up to 250 meters, all ports can communicate with each other

16-Port 10/100Mbps + 2-Port Gigabit Combo Base-T/SFP  
Multi-Mode PoE Switch

FR-S1218MC-240P2

<b>Number of Ports</b>		16 x 10/100Mbps Auto-Negotiation ports 2 x Gigabit Combo (RJ45 / SFP) port
<b>PoE Ports(RJ45)</b>		16* PoE ports compliant with IEEE802.3at/af
<b>Power Pin Assignment</b>		1/2(+),3/6(-)
<b>PoE Budget</b>		240W
<b>LED indicators</b>	<b>Per Port</b>	Link/Act: Green PoE: Yellow
	<b>Per Device</b>	Power: Green
<b>Power Supply</b>		AC 100-240V/50-60Hz 260W internal power
<b>Power Consumption</b>		Maximum: 270.7W(220V/50Hz)
<b>Dimensions ( W x D x H )</b>		440*208*44mm
<b>Environment</b>		Operating Temperature: 0°C - 45°C Storage Temperature: -40°C - 70°C Operating Humidity: 10%~90% RH non-condensing Storage humidity: 5%~90% RH non-condensing