

24-Port Gigabit Ethernet Unmanaged Switch FR-S1124G



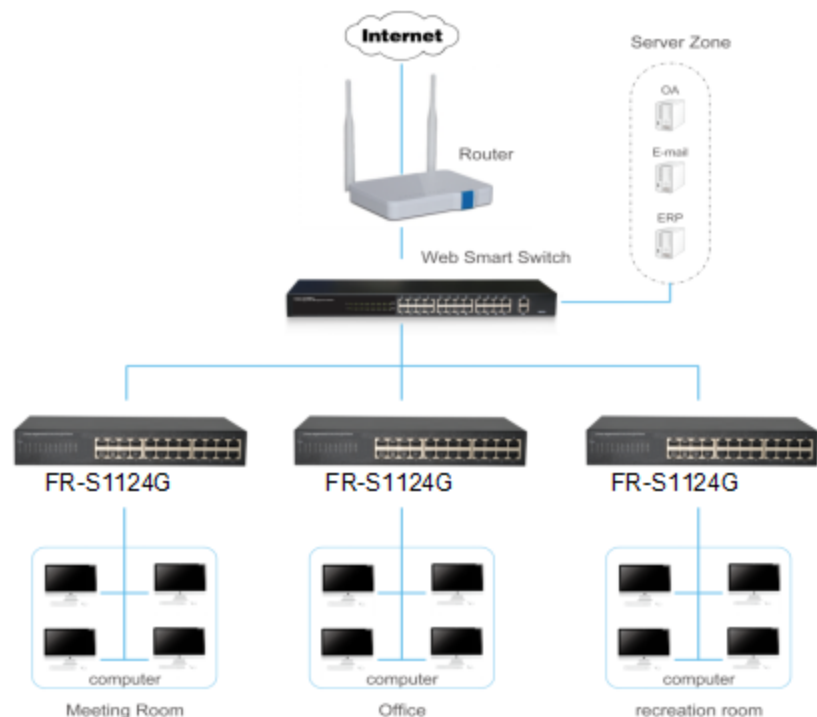
Characteristic

- Intelligent identification
- Internal Power supply
- High performance, durable stability
- Adopt the store - forwarding mode
- Switching Capacity 48Gb

Description

FR-S1124G 24port 10/100/1000M Ethernet Switch provides the seamless network connection. This device integrates 1000Mbps Gigabit Ethernet, 100Mbps Fast Ethernet and 10Mbps Ethernet network capabilities in a highly flexible package. The Switch with a low-cost, easy-to-use, high performance upgrade your old network to a 1000Mbps Gigabit network. Based on Gigabit Ethernet Technology, It is essential to helping solve network bottlenecks that frequently develop as more advanced computer users and newer applications continue to demand greater network resources. Support IEEE802.3az energy efficient Ethernet (EEE), reduce power consumption by detection cable length and operating loading, auto adjust signal intensity, Reduce energy consumption, protect the environment. The switch is easy to install and use. It requires no configuration and installation. It is a great selection for expanding office network.

The application of topology



● 24-Port Gigabit Ethernet Unmanaged Switch FR-S1124G

Features

- Comply with IEEE 802.3, IEEE 802.3u, IEEE802.3x, IEEE802.3ab, IEEE802.3az standards
- Supports IEEE 802.3x flow control for Full-duplex Mode and back-pressure for Half-duplex Mode
- Support Wire-speed and non-blocking performance
- Support Hardware-based learning, and aging
- Support Broadcast and multicast storm control
- Support jumbo frame at all speeds (10/100/1000Mbps)
- 11 inch steel casing design, build-in power supply.

Specification

Model	FR-S1124G	
Chipset	RTL8382L+2*RTL8218B+2*RTL8231	
Standards	IEEE 802.3i、IEEE 802.3u、IEEE802.3ab、IEEE802.3x、IEEE802.3az	
Number of Ports	24 x 10/100/1000Mbps Auto-Negotiation ports	
Network Media (Cable)	10Base-T: UTP category 3,4,5 cable (maximum 100m) 100Base-Tx: UTP category 5,5e cable (maximum 100m) 1000Base-T:UTP category 5e,6 cable (maximum 100m)	
Transfer Method	Store-and-Forward	
Switching Capacity	48Gops	
Packet Forwarding Rate	35.7Mbps	
Packet Buffer	4.1Mbit	
MAC Address Table	8K	
Jumbo Frame	9KByte	
LED indicators	Per-Port	10M/100M Link/ACT: Orange 1000M Link/ACT: Green
	Other	Power : Green
Power Supply	AC 100-240V/50-60Hz 12/1.5A internal power	
Power Consumption	Maximum: 16W(220V/50Hz)	
Dimensions (W x D x H)	280*126*44mm	
Environment	Operating Temperature: 0°C~40°C Storage Temperature: -40°C~70°C Operating Humidity: 10%~90% RH non-condensing Storage Humidity: 5%~90% RH non-condensing	