

24-Port Gigabit + 2-Port Gigabit SFP Switch

FR-S1026GF-F



Characteristic

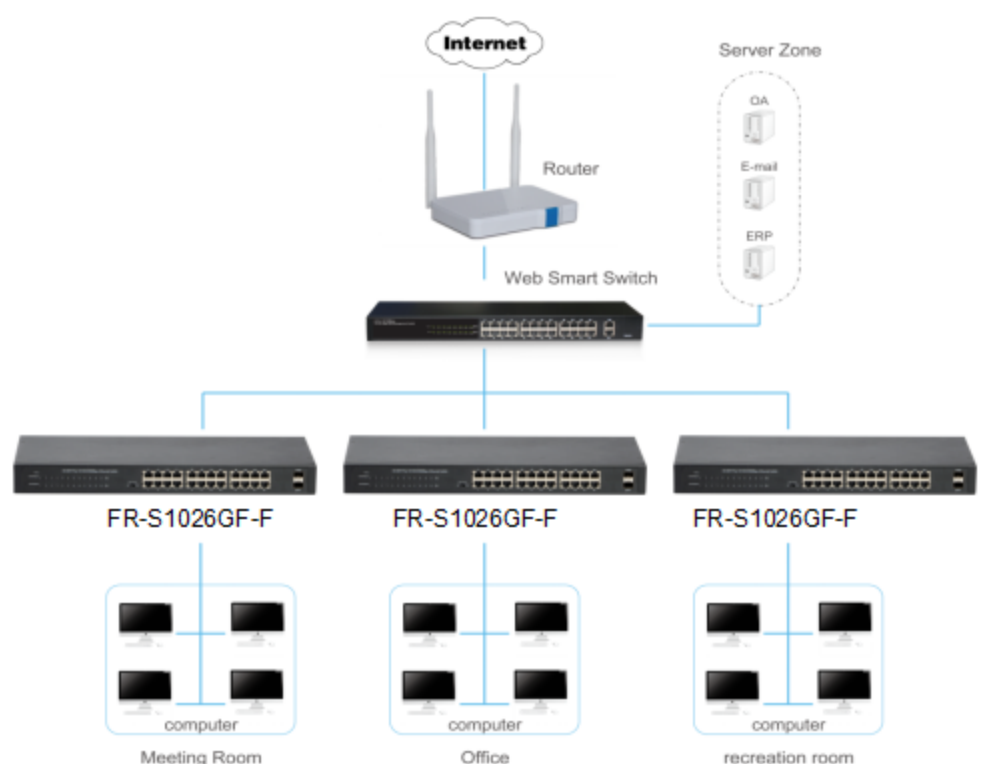
- Intelligent identification
- 2*1000Mbps SFP ports
- Internal Power supply
- High performance, durable stability
- Adopt the store - forwarding mode
- Switching Capacity 52Gb

Description

FR-S1026GF-F 24port 10/100/1000Mbps + 2port 100/1000Mbps SFP Slots Ethernet Switch provides the seamless network connection. This device integrates 1000Mbps Gigabit Ethernet, 100Mbps Fast Ethernet and 10Mbps Ethernet network capabilities in a highly flexible package. The Switch with a low-cost, easy-to-use, high performance upgrades your old network to a 1000Mbps Gigabit network. Based on Gigabit Ethernet Technology, It is essential to helping solve network bottlenecks that frequently develop as more advanced computer users and newer applications continue to demand greater network resources. Support IEEE802.3az energy efficient Ethernet (EEE), reduce power consumption by detection cable length and operating loading, auto adjust signal intensity, Reduce energy consumption, and protect the environment.

The switch is easy to install and use. It requires no configuration and installation. It is a great selection for expanding office network.

The application of topology



● **Switching Capacity 52Gbps**

FR-S1026GF-F

Features

- Comply with IEEE 802.3, IEEE 802.3u, IEEE802.3x, IEEE802.3ab, IEEE802.3az standards.
- Supports up to 8K MAC address.
- Supports IEEE802.3x flow control for Full-duplex Mode and backpressure for Half-duplex Mode.
- Support packet length 9216 bytes jumbo frame packet forwarding at wire speed.
- 24 x 10/100/1000Mbps Auto MDI/MDI-X Ethernet port.
- Two 100/1000Mbps SFP Slots.
- Flow control by Switch.
- LED indicators for monitoring power, link/activity.

Specification

Model Name	FR-S1026GF-F	
Chipset	RTL8382L+2*RTL8218B+2*RTL8231	
Standards and Protocols	IEEE 802.3i、IEEE 802.3u、IEEE 802.3ab、IEEE 802.3x、IEEE 802.3az	
Interface	24 x 10/100/1000Mbps Auto-Negotiation ports 2 x 100/1000Mbps SFP ports 1x Flow control switch	
Network Media	10Base-T: UTP category 3, 4, 5 cable (maximum 100m) 100Base-Tx: UTP category 5, 5e cable (maximum 100m) 1000Base-T: UTP category 5e, 6 cable (maximum 100m) 1000Base-SX:62.5µm/50µm MMF(2m~550m) 1000Base-LX:62.5µm/50µm MMF(2m~550m) Or 10µm SMF (2m~5000m)	
Transfer Method	Store-and-Forward	
MAC Address Table	8K	
Switching Capacity	52Gbps	
Packet Forwarding Rate	38.688Mpps	
Packet Buffer	4.1Mbit	
Jumbo Frame	9216Bytes	
Indicators	Per Device	Power
	Per Port	Link/Activity/Speed
Power Supply	100-240VAC, 50/60Hz 12V 1.5A internal power	
Power Consumption	Maximum: 14.2W (220V/50Hz)	
Dimensions (W x D x H)	440*208*44mm	
Environment	Operating Temperature: 0°C~45°C Storage Temperature: -40°C~70°C Operating Humidity: 10%~90% RH non-condensing Storage humidity: 5%~90% RH non-condensing	

