

## 16-Port 100Mbps + 2-Port Gigabit + 2-Port Gigabit SFP L2 Managed Switch FR-S3020MF-C



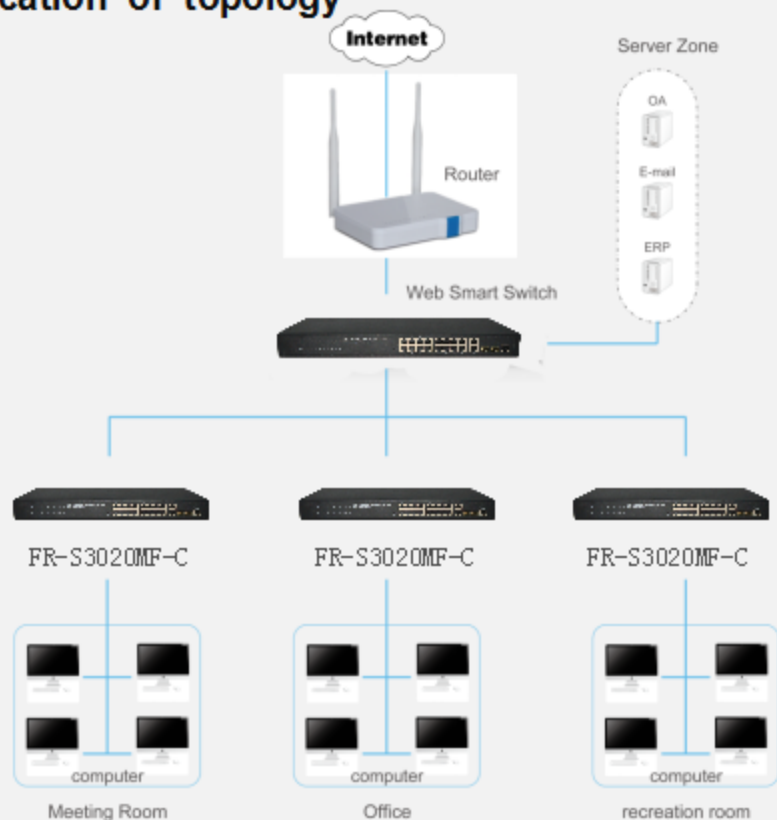
### characteristics

- 16 x 10/100Mbps Auto MDI/MDI-X Ethernet port
- 2x10/100/1000Mbps Auto MDI/MDI-X Ethernet port
- 2x100/1000Mbps SFP ports
- Support port Auto MDI/MDIX
- Switching Capacity up to 11.2G
- Store and forward mode operates
- Support MAC address Auto-learning
- Support Web-based Management

### Description

FR-S3020MF-C is a high performance L2 managed switch . Provides 16\*10/100Mbps self-adaption RJ45 ports, 2\*10/100/1000Mbps RJ45 ports , and 2\*100/1000Mbps SFP ports, it can be used to link bandwidth higher upstream equipment. Support VLAN ACL based on port, easily implement network monitoring, traffic regulation, priority tag and traffic control. Support traditional STP/RSTP/MSTP 2 link protection technology; greatly improve the ability of fault tolerance, redundancy backup to ensure the stable operation of the network. Support ACL control based on the time, easy control the access time accurately. Based on 802.1x authentication , easily set user access. Perfect QOS strategy and plenty of VLAN function, easy to maintenance and management, meet the networking and access requirements of enterprises, intelligent village, hotel, office network and campus network. Built-in high reliability, de-sign for wide voltage input application power supply, even if the voltage is not stable of power grid, also can guarantee the equipment can work normally.

### Application of topology



## Features

- Comply with IEEE802.3i, IEEE802.3u, IEEE802.3ab, IEEE802.3x, IEEE802.3z, IEEE802.3ad standards
- Supports IEEE802.3x flow control for Full-duplex Mode and backpressure for Half-duplex Mode
- Supports MAC address auto-learning and auto-aging
- 16\*10/100Mbps Auto-negotiation RJ45 Port, 2\*10/100/1000Mbps Auto-negotiation RJ45 Port, 2\*100/1000Mbps SFP Port, Support Auto MDI/MDIX and Auto-negotiation function, Auto to option transmission mode and speed
- Store and forward mode operates
- Support SNMP/RMON/TELENT
- Support Storm Control
- Support QoS, Port Mirroring, Link Aggregation Protocol
- LED indicators for monitoring power, link/activity, Speed
- Internal power adapter supply, Ingenious structural design, Suitable for use

## Hardware Specification

<b>Model</b>	FR-S3020MF-C
<b>Chipset</b>	RTL8332M+RTL8208L+RTL8214FC+2*RTL8231
<b>Standards</b>	IEEE 802.3i, IEEE 802.3u, IEEE 802.3ab, IEEE802.3x, IEEE802.3z, IEEE802.3ad, IEEE802.1P, IEEE802.1Q
<b>Network Media (Cable)</b>	10BASE-T: UTP category 3,4,5 cable (maximum 100m) 100BASE-Tx: UTP category 5,5e cable (maximum 100m) 1000BASE-T: UTP category 5e,6 cable (maximum 100m) 1000Base-SX:62.5µm/50µm MMF(2m~550m) 1000Base-LX:62.5µm/50µm MMF(2m~550m) or 10µm SMF (2m~5000m)
<b>Transfer Method</b>	Store-and-Forward
<b>Switching Capacity</b>	11.2Gbps

● 16FE + 2GE + 2G SFP L2 Managed Switch

FR-S3020MF-C

<b>Packet Forwarding Rate</b>		8.4Mbps
<b>Packet Buffer</b>		4.1Mbit
<b>MAC Address Table</b>		8K
<b>Number of Ports</b>		16x 10/100Mbps Auto-Negotiation ports 2 x 10/100/1000Mbps Auto-Negotiation ports 2 x Gigabit SFP ports 1 x RJ45 Console Port
<b>LED indicators</b>	<b>1-16 port</b>	10/100Mbps Link/Act:Green
	<b>17-20 port and SFP</b>	10/100Mbps Link/Act:Orange 1000Mbps Link/Act: Green
	<b>Other</b>	Power: Green SYS:Green
<b>Power Supply</b>		AC 100-240V/50-60Hz internal power
<b>Power Consumption</b>		Maximum:8.22W(220V/50Hz)
<b>Dimensions ( W x D x H )</b>		440*208*44mm
<b>Environment</b>		Operating Temperature: 0°C - 45°C Storage Temperature: -40°C - 70°C Operating Humidity: 10%~90% RH non-condensing Storage humidity: 5%~90% RH non-condensing

## Software Specification

System	IP Configuration(IPV4、IPV6)
	User Configuration
	Time Settings(SNTP)
	Log Management
	SNMP Management(V1,V2C,V3)
	RMON(1,2,3,9)
Port	Port Configuration
	Link Aggregation(static、Lacp)
	Port Mirroring
	Jumbo Frame
Vlan	Port based VLAN,Private VLAN
	MAC based VLAN
	Voice VLAN
	Gvrp
IGMP	IGMP Snooping (V2、V3)
	Multicast Group (256)
STP	IEEE 802.1D STP
	IEEE 802.1W RSTP
	IEEE 802.1S MSTP
Security	Broadcast / Uncast / Multicast Storm Control
	IEEE 802.1x、Radius、TACACS+
	DHCP Snooping/DHCP Relay
	DHCP Server
	ERPS
	IP Source Guard
	ARP Check
	DAI
ACL	MAC-Based ACL
	MAC-Based ACE
	IPv4-Based ACL
	IPv4-Based ACE
QoS	WRR (Weighted Round Robin)
	Port based QoS
	IEEE 802.1p Class of Service
	DSCP-based QoS
	QoS basic mode
	QoS advanced mode (Policy based)
Bandwidth Control	Ingress Port
	Ingress VLAN
	Egress Port
	Egress Queue
MAC Address Setting	Static Mac Setting
	MAC Filtering
	Dynamic Address Learn/Setting

● 16FE + 2GE + 2G SFP L2 Managed Switch

FR-S3020MF-C

LLDP	LLDP Port Configuration
	MED Network Porxy
Management	System information
	Ping Test /Traceroute
	Factory default
	Backup/upgrade Management
	Configuration Management

**FULLRIVER**  
Link our dreams