



12-Port Gigabit + 4-Port Gigabit SFP L2+ Managed Industrial PoE Switch

FR-IS3016PEGMF-C

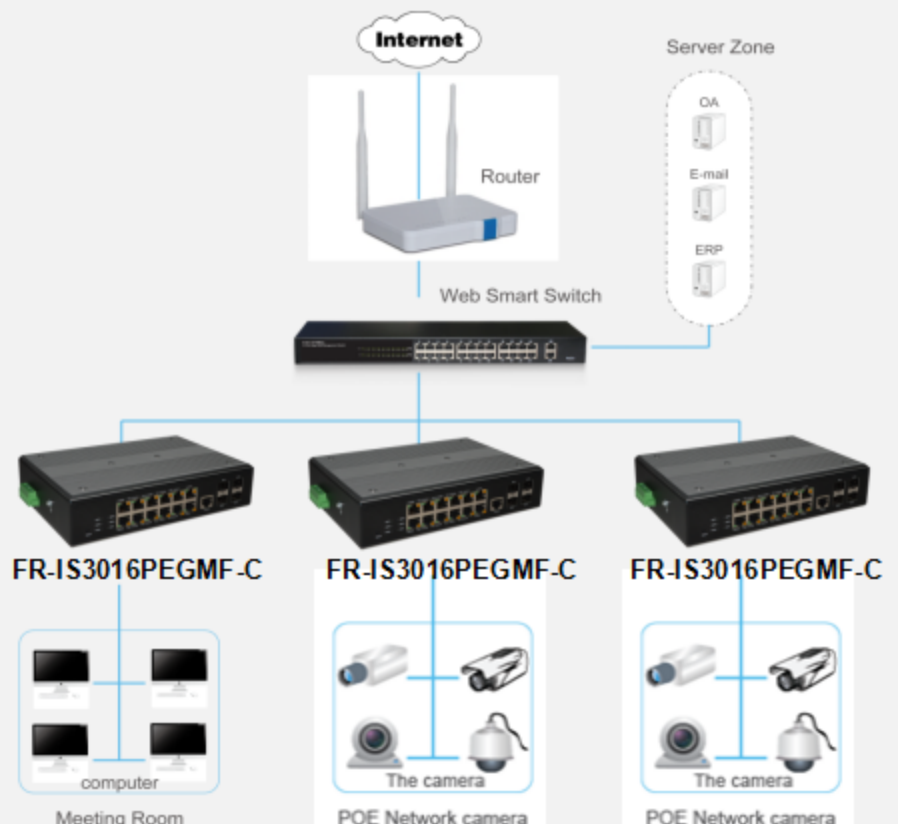
Characteristics

- Wire-speed forwarding, intelligent recognition
- Dual redundant DC44~57V wide range power input
- Support IEEE 1588 protocols
- Provides 8-ports PoE output, two of that compatible with IEEE802.3bt.
- -40°C~75°C Working temperature
- IP40 protection class
- Surge protection up to 6KV
- Power off alarm(1 way relay output, current load capacity 1A @ 24VDC)

Description

FR-IS3016PEGMF-C is a 12-Ports Gigabit +4-Port Gigabit SFP L2+ managed industrial PoE switch. Provides 8-ports PoE output. Two of the that compatible with IEEE802.3bt, each ports can provide power up to 60W and other six ports compatible with IEEE802.3at/af, each ports can provide power up to 30W. Using store and forward technology, combined with dynamic memory allocation, to ensure that the bandwidth is allocated efficiently to each port. Support a variety of management functions, including STP/RSTP, Trunking, LACP, IGMP, VLAN, QoS, RMON, PoE power management, PoE device automatic detection, PoE power supply scheduling, bandwidth management and port mirroring function. This product is designed for harsh industrial environment, external dual redundant DC44~57V wide range power input; IP40 protection grade metal chassis design, support DIN rail installation; port surge protection up to 6KV; the working temperature range of -40°C~75°C, can meet the special needs of industrial automation control.

Application of topology



12-Port Gigabit + 4-Port Gigabit SFP L2+ Managed Industrial PoE Switch
FR-IS3016PEGMF-C
Features

- Comply with IEEE802.3i, IEEE 802.3u, IEEE802.3z, IEEE802.3ab, IEEE802.3x, IEEE802.3ad, IEEE802.3af, IEEE802.3at, IEEE802.3bt, IEEE 1588 standards
- Twelve 10/100/1000Mbps RJ45 port. Eight of these support PoE power supply (Six of the ports compatible with IEEE802.3at/af, two of the ports compatible with IEEE802.3bt)
- Four 1000Mbps SFP optical port
- Support 8K MAC Address Table & MAC address learning
- Support IGMP Snooping protocol
- Support for broadcast storm suppression
- Dual redundant DC44~57V wide range power input
- Power off alarm(1 way relay output, current load capacity 1A @ 24VDC)
- IP40 protection class, all metal chassis design, support DIN rail installation

Hardware specifications

Model	FR-IS3016PEGMF-C	
Chipset	VSC7429-02 + STM32F030 + MAX5980GTJ+	
Standards	IEEE802.3i, IEEE 802.3u, IEEE802.3z, IEEE802.3ab, IEEE802.3x, IEEE802.3az, IEEE802.1d, IEEE802.1q, IEEE802.1p, IEEE802.3ad, IEEE802.1s, IEEE802.1w, IEEE802.3af, IEEE802.3at, IEEE802.3bt, IEEE 1588	
Interface	12 *10/100/1000Mbps RJ45 ports (Auto Negotiatin/Auto MDI/MDIX), eight of these support PoE power supply 4 *1000Mbps SFP optical Port 1 * Console port 1*Reset Button 1*Plug and plug 6 pin terminal	
Network Media	10BASE-T: UTP category 3,4,5 cable (maximum 100m) 100BASE-TX/1000BASE-T: UTP category 5, 5e or above cable (maximum 100m) 1000BASE-X(SFP): MMF, SMF	
Transfer Method	Store-and-Forward	
Mac Address Table	8K	
Switching Capacity	32Gbps	
Packet Forwarding Rate	23.81Mpps	
Packet Buffer	4Mbit	
Jumbo Frame	9.6KBytes	
PoE Ports(RJ45)	2* PoE ports compliant with 802.3bt 4* PoE ports compliant with 802.3at/af	
Power Pin Assignment	Port1~2(802.3bt): 1/2(+),3/6(-),4/5(+),7/8(-) Port3~6(802.3at/af): 1/2(+),3/6(-)	
PoE Budget	300W	
Indicators	Per Device	Power, System(GREEN)
	Per Port	Link/Activity(GREEN),PoE(YELLOW)
Power Supply	DC 44~57V dual redundant input	
Power Consumption	Maximum: 310W (Full load on all ports)	
Dimensions (W x D x H)	220*150*51mm	
Environment	Operating Temperature: -40°C~75°C Storage Temperature: -40°C~85°C Operating Humidity: 5%~95% RH non-condensing Storage humidity: 5%~95% RH non-condensing	

Software Specifications

<p>Basic function</p> <ul style="list-style-type: none"> ● Ethernet Setup ● STP/RSTP/MSTP ● Storm-control ● Port Monitor ● Port rate-limit ● MAC filtering 	<p>Three layers of functional</p> <ul style="list-style-type: none"> ● The ARP deception, the network cheating ● Filtering the IP port ● Static binding IP and MAC ● Arp trust port ● Static routing capacity ● Ping and Traceroute 	<p>The security policy</p> <ul style="list-style-type: none"> ● ACE capacity ● ACL ● QoS ● DAI
<p>VLAN</p> <ul style="list-style-type: none"> ● Port based VLAN ● 802.1Q VLAN 	<p>Safety features</p> <ul style="list-style-type: none"> ● Radius ● Tacacs+ ● Preventing DOS attacks ● dot1x ● The gateway ARP deception 	<p>Application protocol</p> <ul style="list-style-type: none"> ● DHCP Relay ● DHCP snooping ● DHCP Client ● FTP/TFTP
<p>Management</p> <ul style="list-style-type: none"> ● HTTP WEB ● Telnet ● SSH ● Console 	<p>Other function</p> <ul style="list-style-type: none"> ● LLDP ● IGMP Snooping ● SNMPV1,V2c,V3 ● RMON (1,2,3,9) 	<p>PoE Management</p> <ul style="list-style-type: none"> ● PoE Status ● Power supply management mode(auto/energy/static) ● The port priority